

**1316  
Oscillator**

**User and Service Manual**

Copyright © 2005 IET Labs, Inc.

1316 im/August, 2005



**IET LABS, INC.**

**Standards • Decades • Stroboscopes • Sound Level Meters • Bridges**

Formerly manufactured by

**GenRad**

534 Main Street, Westbury, NY 11590

TEL: (516) 334-5959 • (800) 899-8438 • FAX: (516) 334-5988

[www.ietlabs.com](http://www.ietlabs.com)

◆ PRECISION INSTRUMENTS FOR TEST AND MEASUREMENT ◆



---

**IET LABS, INC.**

534 Main Street, Westbury, NY 11590

[www.ietlabs.com](http://www.ietlabs.com)

TEL: (516) 334-5959 • (800) 899-8438 • FAX: (516) 334-5988

## **WARRANTY**

We warrant that this product is free from defects in material and workmanship and, when properly used, will perform in accordance with applicable IET specifications. If within one year after original shipment, it is found not to meet this standard, it will be repaired or, at the option of IET, replaced at no charge when returned to IET. Changes in this product not approved by IET or application of voltages or currents greater than those allowed by the specifications shall void this warranty. IET shall not be liable for any indirect, special, or consequential damages, even if notice has been given to the possibility of such damages.

THIS WARRANTY IS IN LIEU OF ALL OTHER WARRANTIES, EXPRESSED OR IMPLIED, INCLUDING BUT NOT LIMITED TO, ANY IMPLIED WARRANTY OF MERCHANTABILITY OR FITNESS FOR ANY PARTICULAR PURPOSE.



## WARNING



OBSERVE ALL SAFETY RULES  
WHEN WORKING WITH HIGH VOLTAGES OR LINE VOLTAGES.

**Dangerous voltages may be present inside this instrument. Do not open the case  
Refer servicing to qualified personnel**

### **HIGH VOLTAGES MAY BE PRESENT AT THE TERMINALS OF THIS INSTRUMENT**

WHENEVER HAZARDOUS VOLTAGES ( $> 45$  V) ARE USED, TAKE ALL MEASURES TO  
AVOID ACCIDENTAL CONTACT WITH ANY LIVE COMPONENTS.

USE MAXIMUM INSULATION AND MINIMIZE THE USE OF BARE  
CONDUCTORS WHEN USING THIS INSTRUMENT.

**Use extreme caution when working with bare conductors or bus bars.**

WHEN WORKING WITH HIGH VOLTAGES, POST WARNING SIGNS AND  
KEEP UNREQUIRED PERSONNEL SAFELY AWAY.



## CAUTION



DO NOT APPLY ANY VOLTAGES OR CURRENTS TO THE TERMINALS OF THIS  
INSTRUMENT IN EXCESS OF THE MAXIMUM LIMITS INDICATED ON  
THE FRONT PANEL OR THE OPERATING GUIDE LABEL.



# Specifications

**Frequency:** 10 Hz to 100 kHz in 4 decade ranges. Controlled by one 11-position and one 10-position switch for the most-significant digits and a continuously adjustable dial with detented zero-position for the third digit; in-line readout with decimal point and frequency units.

**Accuracy:**  $\pm 1\%$  of setting, *Drift* (typical at 1 kHz), warmup 0.1%, short-term (10 min) 0.001%, long-term (12 h) 0.005%. *Resettability*, within 0.005%.

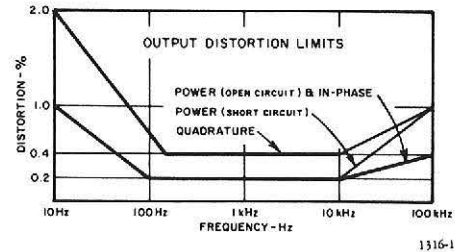
**Power Output:** Controlled by 5-position switch and uncalibrated vernier. Monitored by meter with  $\pm 3\%$  accuracy. Available at rear BNC connector.

\*With continuously adjustable dial set at zero detent position.

Output Range					
	1.5 V	5 V	15 V	50 V	150 V
Open circuit, rms	$\geq 1.25$ V	$\geq 4$ V	$\geq 12.5$ V	$\geq 40$ V	$\geq 125$ V
Distortion	$< 0.2\%$ from 100 Hz to 10 kHz				
Hum	0.003% of max output				
Response	output constant within $\pm 2\%$ from 10 Hz to 50 kHz, $\pm 5\%$ for frequencies $> 50$ kHz				
Short Circuit	5 A	1.6 A	0.5 A	0.16 A	0.05 A
Distortion	$< 0.2\%$ from 100 Hz to 10 kHz				
Impedance	0.25 $\Omega$	2.5 $\Omega$	25 $\Omega$	250 $\Omega$	2.5 k $\Omega$
Power	1.6 W nominal into matched load				

**Reference Outputs:** Quadrature output lags in-phase output by  $90^\circ$ . Each available at rear BNC connectors.

	In-Phase	Quadrature
Output, open-circuit	1.25 $\pm 0.25$ V rms	
Distortion, 100 Hz to 10 kHz	$< 0.2\%$	$< 0.4\%$
Response, 10 Hz to 10 kHz	$\pm 2\%$	
10 kHz to 100 kHz	$\pm 4\%$	
Minimum Load	47 k $\Omega$	



**Synchronization:** Input, frequency can be locked to external signal; lock range,  $\pm 1\%$ /V rms input up to 10 V; frequency controls function as phase adjustment. Output,  $\geq 0.3$  V rms behind 27 k $\Omega$ ; useful to sync oscilloscope or to drive a counter or another oscillator. Single rear BNC connector serves as both input and output terminal.

**Power:** 100 to 125 and 200 to 250 V, 50 to 60 Hz, 36 W.

**Mechanical:** Bench or rack mount. Dimensions (w  $\times$  h  $\times$  d): Bench, 19.75  $\times$  5  $\times$  13.06 in. (502  $\times$  127  $\times$  332 mm); rack, 19  $\times$  3.47  $\times$  11.44 in. (483  $\times$  88  $\times$  291 mm). Weight: Bench, 26 lb (12 kg) net, 32 lb (14 kg) shipping; rack, 21 lb (10 kg) net, 27 lb (12 kg) shipping.

Catalog Number	Description
----------------	-------------

1316-9700	<b>1316 Oscillator</b> Bench Model
1316-9701	Rack Model



---

# Introduction—Section 1

---

1.1 PURPOSE . . . . .	1-1
1.2 DESCRIPTION . . . . .	1-1
1.3 CONTROLS, CONNECTORS, AND INDICATORS . . . . .	1-1
1.4 SYSTEMS . . . . .	1-1
1.5 ACCESSORIES SUPPLIED . . . . .	1-1

## 1.1 PURPOSE.

The Type 1316 Oscillator is a high-performance instrument with an output of 10 Hz to 100 kHz. It was specifically designed for use with the Type 1238 Detector and the Type 1616 Precision Capacitance Bridge, and is also an excellent general purpose instrument.

## 1.2 DESCRIPTION.

The 1316 Oscillator is a decade-conductance-tuned, Wien-bridge oscillator containing a low-distortion power amplifier that is transformer coupled to provide isolation from the load. Output power and frequency are selected by front-panel controls; all external connections are made to the rear panel for clutter-free operation.

A provision to introduce or extract a synchronizing signal is included in the oscillator circuit. The extracted signal is independent of the output setting and can be used to operate a counter or to synchronize an oscilloscope.

Other features are: unambiguous in-line readout, decade-frequency selection with positioned decimal point and

units, and two reference outputs (IN-PHASE and QUADRATURE). The reference outputs are for use with the Type 1238 phase-sensitive Detector.

## 1.3 CONTROLS, CONNECTORS, AND INDICATORS.

The front- and rear-panel controls, connectors and indicator are shown in Figures 1-1 and 1-2 respectively. Refer to Tables 1-1 and 1-2 for a functional and physical description.

## 1.4 SYSTEMS.

The 1316 oscillator is used as a component in the 1621 Precision Capacitance Measurement System (Figure 1-3).

## 1.5 ACCESSORIES SUPPLIED.

A 3-wire, 7-ft power cord (P/N 4200-9625) is supplied with the instrument.

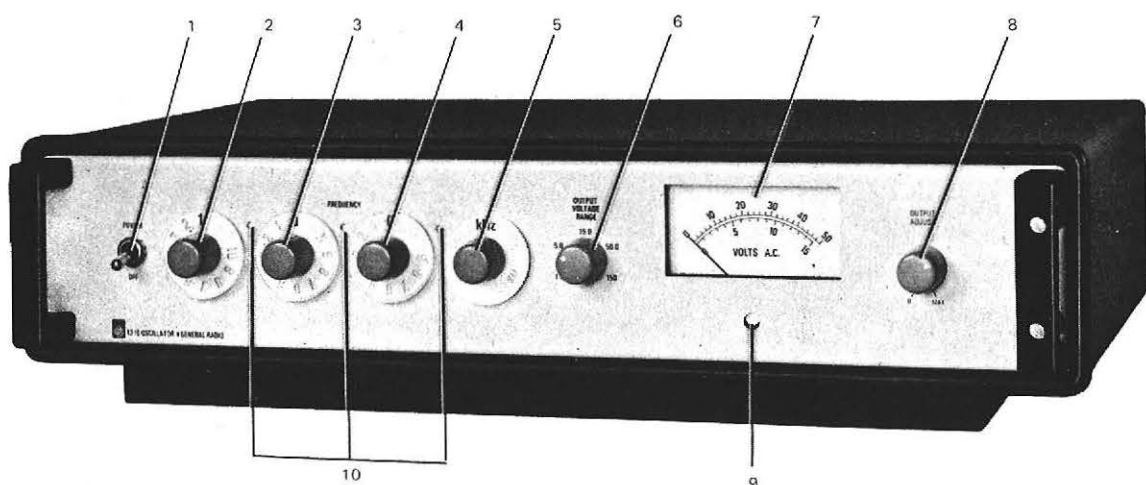


Figure 1-1. Front-panel controls, connectors and indicators.

Table 1-1

# FRONT PANEL CONTROLS AND INDICATOR

Figure 1-1  
Ref. No.

Figure 1-1 Ref. No.	Name	Description	Function
1	POWER switch	2-position toggle switch, down position: OFF.	Turns instrument on or off.
2	FREQUENCY selector	10-position rotary switch, dial-marked 1 to 10.	Selects and indicates 1st digit of frequency.
3	FREQUENCY selector	11-position rotary switch, dial marked 0 to 9 and X (X indicates 10 or 0).	Selects and indicates 2nd digit of frequency.
4	FREQUENCY selector	Stepless potentiometer, dial marked 0 to 9 with detent at 0.	Selects and indicates 3rd digit of frequency.
5	FREQUENCY range switch	4-position switch, dial marked Hz, Hz, kHz, and kHz.	Selects frequency range, indicates units, and controls illuminated decimal point.
6	OUTPUT VOLTAGE RANGE switch	5-position rotary switch, panel-marked 1.5, 5.0, 15.0, 50.0, and 150.	Selects output-voltage range and indicates full-scale meter range (item 7). Simultaneously switches the output impedance from 0.25 $\Omega$ to 2.5 k $\Omega$ in decade steps.
7	Voltmeter	Ac meter with 0-15 and 0-50-V scales.	Indicates output terminal voltage, in ranges selected by item 6.
8	OUTPUT ADJUST control	Stepless, rotary potentiometer with limits labeled 0 and MAX.	Controls output level in the range selected by item 6.
9	—	Zero-adjust screw.	Mechanically adjusts output-voltage meter for mechanical zero.
10	—	Front-panel, white indicator lights.	Indicates position of decimal point, controlled by the FREQUENCY range switch (item 5).

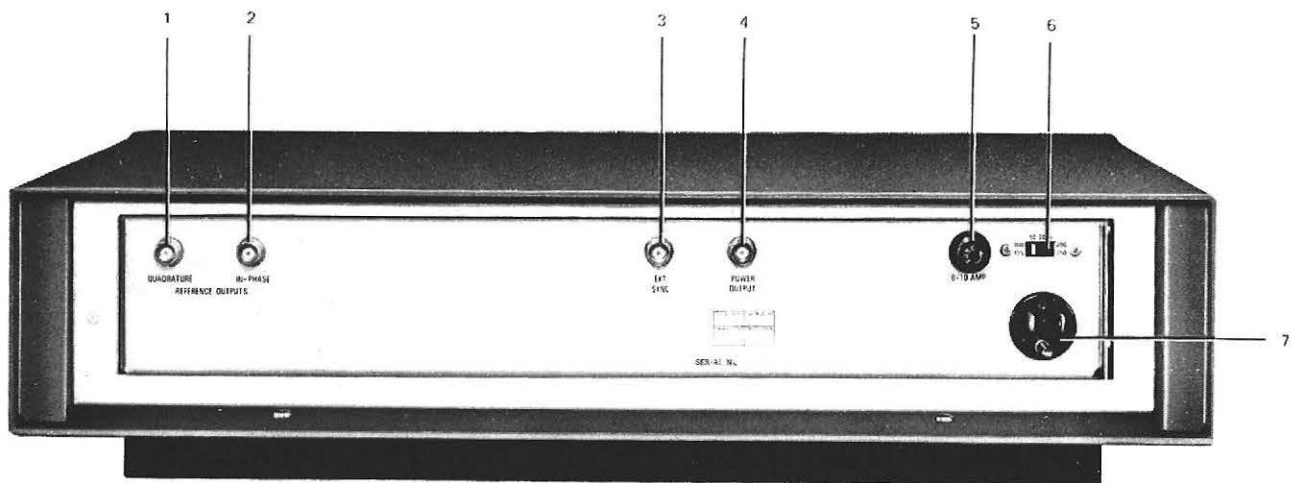


Figure 1-2. Rear-panel control and connectors.

Table 1-2  
REAR-PANEL CONTROLS AND CONNECTORS

Figure 1-2  
Ref. No.

Ref. No.	Name	Description	Function
1	QUADRATURE REFERENCE OUTPUT	BNC jack	Provides a reference output that lags the "in-phase" reference by $90^\circ$ at 1.25 V o.c.
2	IN-PHASE REFERENCE OUTPUT	BNC jack	Provides a reference output, in-phase with power output, at 1.25 V o.c.
3	EXT SYNC connector	BNC jack	For synchronizing output frequency to an external source (lock range is $\pm 1\%/V_{rms}$ , up to 10 V) or constant-amplitude signal source (0.3 V behind 27 k $\Omega$ ).
4	POWER OUTPUT connector	BNC jack	<b>Main output, 1.6 W nominal may be 125 V o.c. or 5 A s.c.</b>
5	Fuse	Bussman MDL 8/10 A, slo-blo	Protection against damage from a short circuit for 110- or 220-V operation.
6	50-60 Hz 100 V-125 V 200 V-250 V	Two-position slide switch	Switches line power connection for either 110-V or 220-V operation.
7	_____	Three-pin power plug	Accepts 3-wire line cord to power instrument.

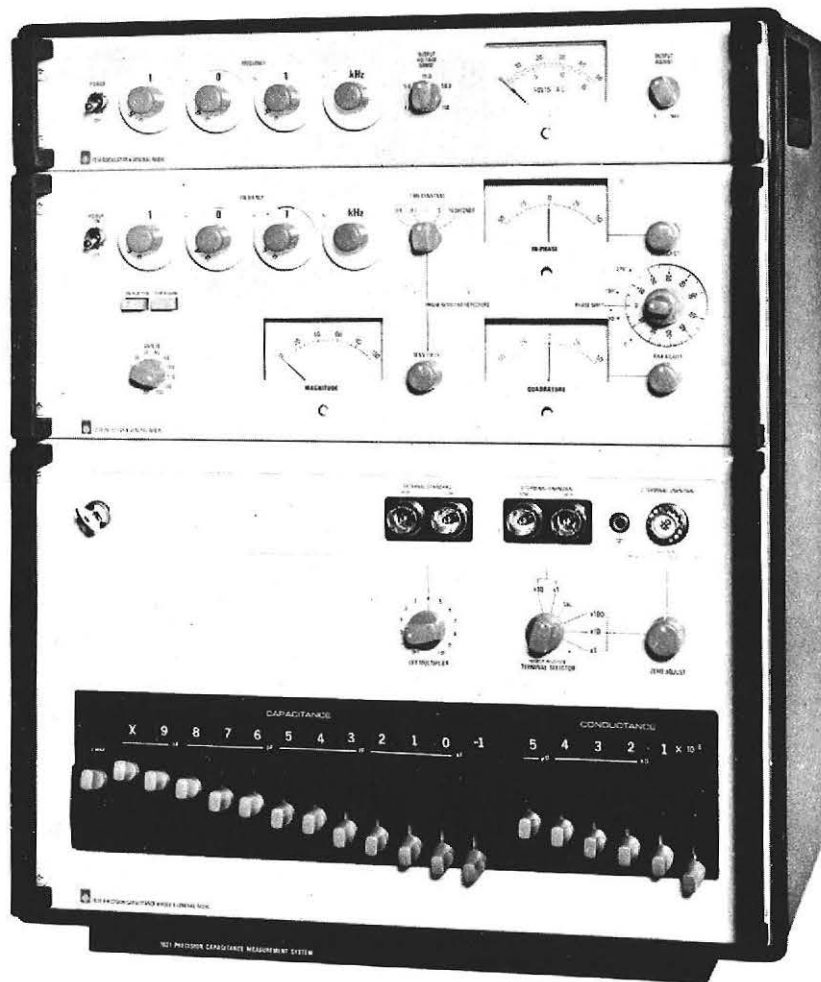


Figure 1-3. Type 1621 Precision Capacitance-Measurement System.

---

# Installation—Section 2

---

2.1 GENERAL . . . . .	2-1
2.2 DIMENSIONS . . . . .	2-1
2.3 POWER-LINE CONNECTION . . . . .	2-1
2.4 BENCH MODELS . . . . .	2-1
2.5 RACK MODELS . . . . .	2-2
2.6 LINE-VOLTAGE REGULATION . . . . .	2-4
2.7 EXTERNAL CONNECTIONS . . . . .	2-4

## 2.1 GENERAL.

The Type 1316 Oscillator is available for either bench use or installation in an EIA Standard RS-310, 19-in. relay rack with universal hole spacing. Appropriate cabinet and hardware sets are available for conversion of a bench model for rack installation or vice versa.

## 2.2 DIMENSIONS.

Outline drawings showing overall dimensions of the oscillator in bench and rack models are shown in Figure 2-1.

## 2.3 POWER-LINE CONNECTION.

Power requirement is 36 W at 100 to 125 or 200 to 250 V, 50 to 60 Hz. Make connections as follows:

- Set the line-voltage switch on the rear panel to correspond with the available power-line voltage. Use a small screwdriver to slide the switch.
- Connect the external power line to the power plug, using the power cord supplied or an equivalent, 3-conductor cord.

A single 8/10-A fuse protects both the low- and high-voltage circuits.

## 2.4 BENCH MODELS.

### 2.4.1 General.

Each bench model comes completely assembled in a metal cabinet intended for use on a table or laboratory bench. The instrument is mounted on tracks that permit easy removal for inspection or repair.

### 2.4.2 Cabinet Removal.

- Set the instrument in the horizontal position, free of unnecessary cables.
- Remove the four dress-panel screws (A), accessible through holes in the handles.
- Carefully pull the instrument out of the cabinet.

### 2.4.3 Conversion for Rack Mounting.

To convert a bench instrument for rack mounting, exchange the cabinet and install appropriate hardware, as follows:

- Obtain a Rackable Cabinet Assembly P/N 4174-3240 (Table 2-1) from General Radio Company.
- Obtain, optionally, Bracket Set P/N 4174-2007 (Table 2-2). This is especially recommended for a heavy instrument, which needs support from the rear rail of the rack.

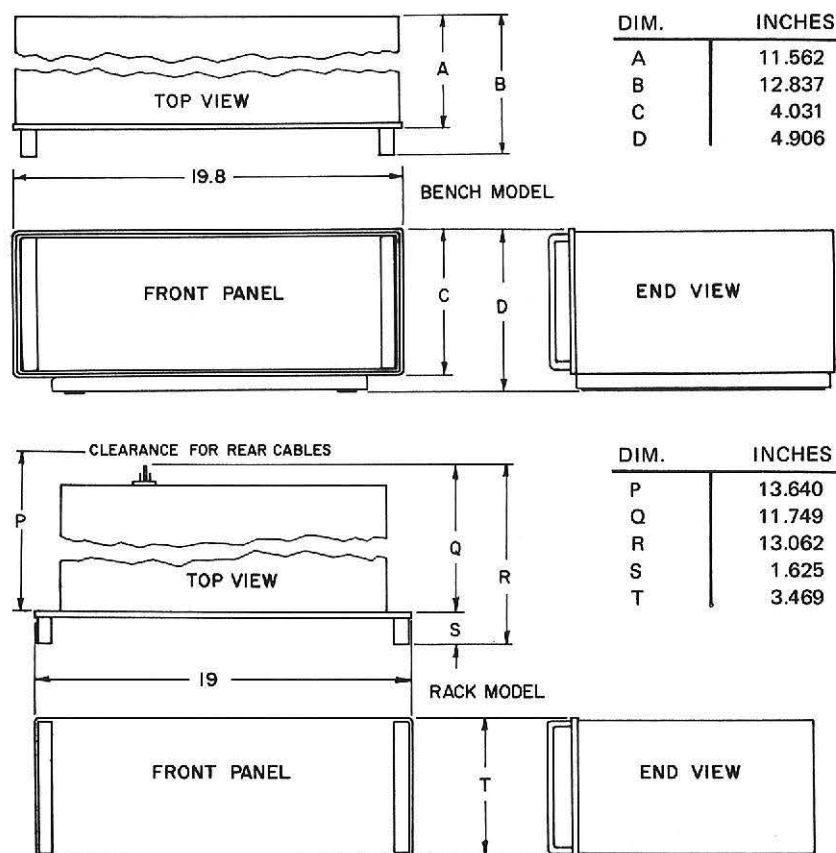


Figure 2-1. Dimensions of the 1316 bench and rack-model instruments.

- Remove the cabinet, as in paragraph 2.4.2.
- Remove the rear cover from the bench cabinet, with screws (B Figure 2-2) , for later installation on the rack cabinet.
- Proceed with the rack installation; skip to paragraph 2.5.2, step b.

## 2.5 RACK MODELS.

### 2.5.1 General.

Each rack model comes completely assembled in a suitable metal cabinet, which is designed to stay semipermanently in a rack. The instrument can be drawn forward on extending tracks for access with support, or (with a lift) withdrawn completely. The cabinet and hardware listed in Tables 2-1 and 2-2 are all included with a rack-model instrument.

### 2.5.2 Installation.

Figure 2-3

Directions follow for mounting the cabinet in a rack and installing the instrument on its tracks:

- Remove 4 dress-panel screws (A) and slide the instrument out of the cabinet until the tracks are fully extended. Continue pulling the instrument forward until motion along the tracks is stopped. At this juncture, tilt the front of the instrument up slightly and continue withdrawal, past the stops, until it is free.

- Insert the rack cabinet wherever desired in the rack — be sure it's level — and fasten it with 4 screws (C) to the front rails.

- If the rack contains a rear support rail, use brackets (D) to support the cabinet with the rear rails; open-slotted screw holes allow positioning.

- Use the set of slots in the sides of the cabinet that allow alignment of the open-slotted holes in the brackets with threaded holes in the rail. The long flange should extend to the rear.

- Insert screws (E) from inside the cabinet, through the slotted holes and drive them into the holes in the long flange of the bracket. Each side takes 2.

Table 2-1

### RACKABLE CABINET ASSEMBLY (P/N 4174-3240)

Quantity	Description	
1	Hardware set, including:	4174-2004
2	Screws, 0464-32, 1/4-in, thread forming ("B" for rear cover).	—
4	Screws, 0.190-32, 9/16 in, dress ("A" for front panel).	—
4	Sets of 10-32 nuts and washers (for screws "A", if needed).	—

## 2-2 INSTALLATION



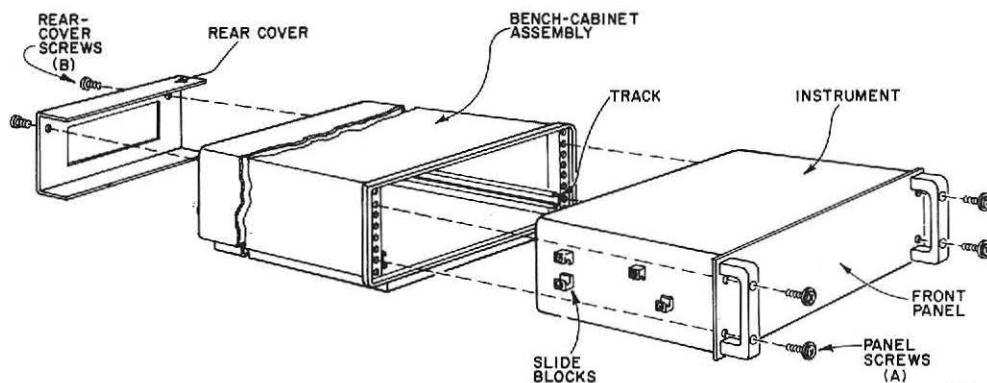


Figure 2-2. Bench-cabinet installation.

#### NOTE

Start the screws in the appropriate holes off the rack, to make the threading easier.

f. Pass screws (B) through brackets and screw 2 into each rear rail. (Details may be varied to suit particular situations.)

g. To install the instrument, first set its rear edge in the cabinet front opening. Slide the instrument back, making sure that the rear and the upper front slide blocks engage the tracks. (Stops prevent further insertion.)

h. Pull the instrument forward *with* the tracks, keeping a hand on each side (fingers underneath). Slide the instrument back about 1/2 in. along both tracks, past the stops, by pressing down on the tracks (with thumbs) while tilting the front of the instrument up slightly.

i. Push the instrument back into the rack, checking for smooth operation of the tracks and slide blocks.

#### NOTE

The instrument is now readily accessible for behind-the-panel adjustments. It slides in and out freely on extending tracks.

Table 2-2 -

#### BRACKET SET FOR RACK MODEL (P/N 4174-2007)

Ref.	Quantity	Description
D	2	L brackets with open-slotted holes.
E	4	Screws, 8-32, 3/16 in., thread forming.
C, B	8	Screws, 10-32, 1/2-in., thread forming.

#### 2.5.3 Conversion for Bench Use.

To convert a rack-mounting instrument for bench use, exchange the cabinet, as follows:

a. Obtain a Bench Cabinet assembly P/N 4172-4015 (Table 2-3) from General Radio Company.

b. Remove the instrument from the rack cabinet, using the procedure in step a, para. 2.5.2.

c. Stand the instrument face down, to rest on its handles, and slip the bench cabinet over it. Carefully return it to a horizontal position.

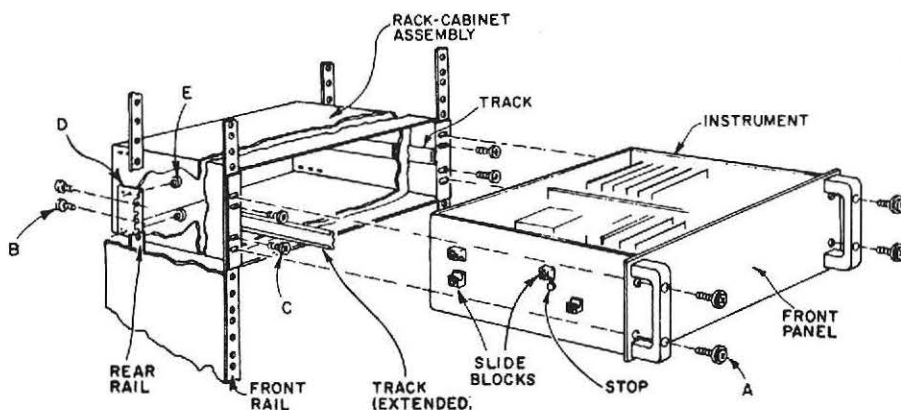


Figure 2-3. Rack-cabinet installation.

e. Transfer the rear cover, with screws (B), from rack cabinet to bench cabinet.

The accuracy of measurements accomplished with precision electronic test equipment operated from ac line sources can often be seriously degraded by fluctuations in primary input power. Line-voltage variations of  $\pm 15\%$  are commonly encountered, even in laboratory environments. Although most modern electronic instruments incorporate some degree of regulation, possible power-source problems should be considered for every instrumentation setup. The use of line-voltage regulators between power lines and the test equipment is recommended as the only sure way to rule out the effects on measurement data of variations in line voltage.

All external connections to the Type 1316 Oscillator are made to rear-panel BNC connectors. This feature facilitates the use of the 1316 in the Type 1621 Precision-Capacitance-Measurement System (Figure 1-3).

The main output of the oscillator is available at the rear-panel POWER OUTPUT jack. Output-voltage range and amplitude are controlled by the front-panel OUTPUT VOLTAGE RANGE and OUTPUT ADJUST controls respectively.

A single rear-panel BNC connector serves the dual purpose of an input or output jack. As an input, the oscillator frequency can be locked to an external signal.

**General.** The REFERENCE OUTPUT connectors were designed into the Oscillator primarily to provide low-level fixed-amplitude reference signals for the Type 1238 Detector. However, they can be used for any application requiring a pair of 1-V reference signals with a phase difference of 90°.

**IN-PHASE.** The IN-PHASE output jack provides a reference voltage that is in phase with the main POWER OUTPUT of the 1316 Oscillator. This voltage (open circuit) is  $1.25 \pm 0.2$  V rms. Distortion is less than 0.2% from 100 Hz to 10 kHz and the voltage response is typically  $\pm 2\%$  from 10 Hz to 10 kHz, and  $\pm 4\%$  from 10 kHz to 100 kHz. *The minimum load impedance should be 47 k $\Omega$ .* A smaller impedance will reduce the output voltage and possibly cause distortion.

**BENCH CABINET ASSEMBLY COMPLETE (4172-4015)**

Quantity	Description	Part No.
1	Bench Cabinet Assembly, including: 1 Cabinet 1 Gasket 1 Base with hardware (includes hinge and toggles)	4172-2042
	Factory assembled with:	
2	Tracks	
2	Brackets, rear, (and screws)	
	Supplied with:	
2	Screws, 0.164-32, 1/4 in., thread forming ("B" for rear cover)	—
4	Screws, 10-32, 9/16 in., dress ("A" for front panel)	—

**QUADRATURE.** The QUADRATURE output jack provides a reference voltage that leads the IN-PHASE and POWER OUTPUT voltages by 90°. This voltage (open circuit) is  $1.25 \pm 0.2$  V rms. Distortion is less than 0.4% from 100 Hz to 10 kHz and the voltage response is typically  $\pm 4\%$  from 10 kHz to 100 kHz. *The minimum load impedance should be 47 k $\Omega$ .*

## 2-4 INSTALLATION



#### **NOTE**

The instrument is fitted with a new-design power-connector that is in conformance with the International Electrotechnical Commission publication 320. The 3 flat contacts are surrounded by a cylindrical plastic shroud that eliminates the possibility of electrical shock whenever the power cord is being unplugged from the instrument. In addition, the center ground pin is longer, which means that it mates first and disconnects last, ensuring greater user protection from electric shock.

The panel connector is a standard 3-pin grounding-type, the design of which has been accepted world wide for electronic instrumentation, and is rated for 250 V at 6A. It also meets requirements of Underwriter's Laboratories in the U.S. and the Canadian Standards Association. The receptacle accepts power cords fitted with the Belden type SPH-386 connector.

---

# Operation—Section 3

---

3.1 GENERAL . . . . .	3-1
3.2 OPERATIONAL CHECKS . . . . .	3-1
3.3 NORMAL OPERATION . . . . .	3-2
3.4 APPLICATIONS . . . . .	3-2

## 3.1 GENERAL.

This section contains operational checks, operating instructions, and a basic description of some applications for which the 1316 Oscillator can be used.

### 3.1.1 Equipment Turn-on.

To prepare the instrument for use, perform the following steps:

a. Set the rear-panel line-voltage selector switch to the line-voltage used (100-125 V or 200-250 V, 50-60 Hz), and connect the instrument to the power line, using the power cable supplied.

b. Set the power switch to POWER. One of the decimal-point lamps should glow. Its position will depend on the FREQUENCY range-switch setting (Refer to Table 3-1).

### 3.1.2 Meter Zeroing.

The output voltage meter has been zeroed at the factory. If it becomes necessary to re-zero the meter, proceed as follows:

a. Check to see that the POWER switch is set to OFF. If the instrument has been operating, allow sufficient time for the meter indicator to stabilize near zero.

b. Adjust the meter zero-adjust screw for a zero indication. Gently tap the meter face occasionally during adjustment.

c. Set the oscillator controls for any output within the range of the instrument.

d. Turn on the oscillator. Note that an output is indicated and then turn off the oscillator.

e. Check to see that the meter indicator stabilizes on zero.

### 3.1.3 Stray Capacitance.

Stray capacitance of most shielded leads or coaxial cables is about 30 pF per foot, which, at 100 kHz, amounts to a shunt impedance of about 55 k $\Omega$ . Therefore, the cable length should be kept to a minimum when a high-impedance load is to be driven at high frequencies.

## 3.2 OPERATIONAL CHECKS.

### 3.2.1 General.

These procedures can be used for incoming inspection, operator familiarization, or as a periodic quick-check on instrument operation. Table 5-1 includes recommended test equipment for these checks. Refer to para. 5.8 if unable to obtain the performance called for.

Table 3-1

DECIMAL POINT POSITION	
Position of A-S5 (from fully counterclockwise)	POSITION OF DECIMAL POINT*
1 (Hz)	XX.X
2 (Hz)	XXX.
3 (kHz)	X.XX
4 (kHz)	XX.X

\*X = a frequency dial

### 3.2.2 Output Frequency.

The frequency of the oscillator output signal should correspond with the setting of the FREQUENCY selectors. For a quick-check of output frequency proceed as follows:

- Set the 1192 counter controls to measure frequency and connect it to the oscillator POWER OUTPUT jack.
- Turn the oscillator on and set the frequency selectors for any frequency between 10 Hz and 100 kHz.
- Observe the counter visual register. It should display the same frequency set by the frequency selectors  $\pm 1$  count.

### 3.2.3 Output Voltage.

The Oscillator is equipped with an ac voltmeter for monitoring the output voltage. For an operational check of the output voltage, simply turn the instrument on, set the frequency and voltage controls for some value within the range of the instrument, and observe the front-panel meter. This meter will indicate the voltage at the output jack within  $\pm 3\%$ .

## 3.3 NORMAL OPERATION.

### To use the instrument as a source:

- Turn on the oscillator and allow approximately 1 minute for it to reach normal operating temperature. For optimum frequency and amplitude stability allow 30-minutes warmup.
- Set the FREQUENCY range switch to the desired frequency range. Notice that this control positions the decimal point.
- Set the FREQUENCY selectors to the desired frequency.
- Set the OUTPUT VOLTAGE RANGE switch to the range that will provide the desired output voltage.
- Adjust the OUTPUT ADJUST control to obtain the desired output voltage reading on the output voltage meter.

### To use the instrument synchronized to an external source.

- Perform steps a-e above.
- Connect the external signal to the EXT SYNC jack (Figure 1-2). The lock range of the oscillator is  $\pm 1\%/V$  rms sync input up to 10 V. For example, if a 1-kHz, 1-V sync signal is used, the oscillator output frequency will lock to

the external signal within the range 990-1010 Hz. If the sync-signal voltage is doubled the lock range also doubles (980-1020 Hz).

The oscillator will remain synchronized so long as it is operated within the lock range.

## 3.4 APPLICATIONS.

### 3.4.1 General.

One of the most important features of the Type 1316 Oscillator is that it provides an easy-to-read, unambiguous, repeatable, in-line readout of its frequency. This will be of value in production testing and calibrating where many accurate and repeatable frequencies must be selected quickly.

Some typical applications are presented in the following paragraphs.

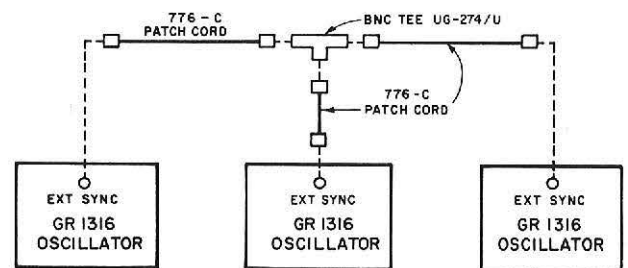
### 3.4.2 Slaved Oscillators.

Because the EXT SYNC jack is simultaneously an input and an output connector, two or more oscillators can be synchronized or slaved by connecting their EXT SYNC jacks together (Figure 3-1). Oscillators connected in this manner will operate at the same frequency, or multiple thereof, and can be made to differ in phase ( $180^\circ \pm 75^\circ$ ) by adjustment of the frequency selectors within the lock range. The lock range is  $\pm 1\%/V$  rms input up to 10 V.

Another obvious application is to lock one or more oscillators to a reference source that has greater accuracy and long-term stability. This is done by connecting the source to the EXT SYNC jack. If more than one oscillator is to be used, connection between instruments is shown in Figure 3-1. With the instrument(s) synchronized in this fashion accuracy and long-term stability will be identical with the reference; short-term stability will be the same as if the oscillator was free-running.

### 3.4.3 Amplitude-Modulated Oscillator.

**Amplitude modulation.** If the oscillator is operated outside of the lock range, the sync signal will beat with the oscillator frequency and produce an audio-frequency, amplitude-modulated output. The modulation will be approximately sinusoidal for modulation levels up to about 10%.



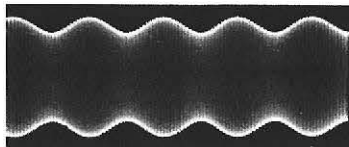
1316-3

Figure 3-1. Method of connecting slaved oscillators.

## 3-2 OPERATION

This arrangement is not ideal, but it does provide amplitude-modulated signals in the audio range where normally they are not conveniently obtainable. Modulated outputs of this type can be used to measure the effects of incidental am on other measurements and to provide a modulated source to reduce meter-friction errors in ac measurements.

The figure shows one example of amplitude modulation:



**Figure 3-2.** 10-kHz output of an oscillator modulated at 500 Hz by a 9.5-kHz signal applied to the EXT SYNC jack.

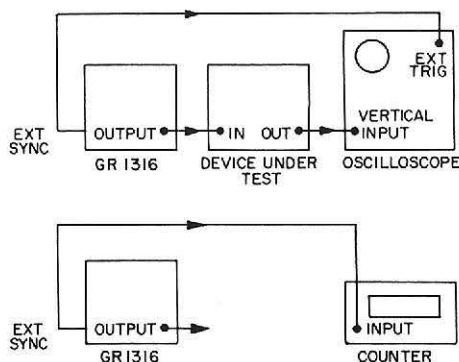
#### 3.4.4 Output Sync.

**Oscilloscope trigger.** Since the sync output is independent of the output level, it can be used to trigger an oscilloscope in applications where the oscillator output is often varied, thereby eliminating frequent readjustment of the oscilloscope trigger circuits.

**Counter trigger.** A counter can be driven from the EXT SYNC jack when more precise adjustment of frequency is desired or when the front-panel output is not sufficient to trigger the counter.

#### 3.4.5 Systems Use.

All external connections to the oscillator are made at the rear panel — a convenient feature for systems use. The 1316 is one of 3 integrated units in our Type 1621 Precision Capacitance Measurement System (Figure 1-3). It functions as the drive oscillator for the system and supplies the detector with 2 reference inputs. The high level, stability, and low-noise characteristics of this oscillator play a large role in producing the ultra-precise measurements and comparisons that the system is capable of providing.



**Figure 3-3.** The oscillator used to trigger: a. an oscilloscope; b. a counter.





# Theory—Section 4

4.1 GENERAL . . . . .	4-1
4.2 WIEN-BRIDGE THEORY . . . . .	4-2
4.3 CIRCUIT DESCRIPTION . . . . .	4-3
4.4 SYNCHRONIZATION . . . . .	4-5

## 4.1 GENERAL.

Figure 4-1 is a functional block diagram of the Type 1316 Oscillator. The 1316 is comprised of a conductance-tuned oscillator (a modification of the Wien bridge) followed by an output amplifier, an autotransformer, and a meter circuit.

The oscillator frequency is varied in four decade steps by effectively changing the capacitance (C) of the modified

Wien bridge, and is varied in smaller, discrete steps by changing two conductance decades (G). The continuously adjustable decade varies the frequency by altering the voltage across conductance g, thereby, changing the effective conductance.

Wien-bridge theory is essential to comprehending how the 1316 circuitry functions. Therefore, para. 4.2 precedes a basic circuit description for this instrument.

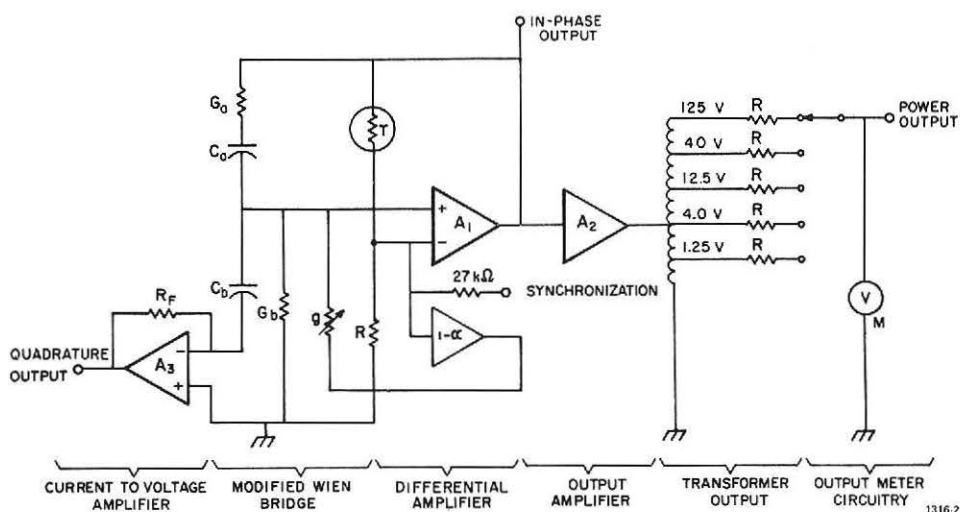


Figure 4-1. Functional block diagram of the type 1316 decade oscillator.

## 4.2 WIEN-BRIDGE THEORY.

### 4.2.1 General.

A Wien bridge (Figure 4-2) consists of two parts: a frequency-determining impedance divider, which provides positive feedback to sustain oscillation and an amplitude-determining resistive divider, which supplies negative feedback to stabilize amplitude. The following paragraphs explain how both of these work.

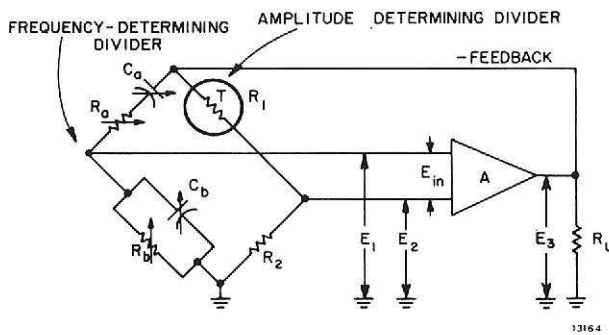


Figure 4-2. Schematic diagram of a typical Wien bridge.

### 4.2.2 Frequency.

Figures 4-2 & 4-3.

The operating frequency,  $f_o$ , of a Wien-bridge oscillator depends on the values of the components in the impedance divider:

$$f_o = \frac{1}{2\pi \sqrt{R_a C_a R_b C_b}} ;$$

$$\text{since } \omega = 2\pi \text{ then } \omega_o = \frac{1}{\sqrt{R_a C_a R_b C_b}}$$

The transfer function (gain and phase shift Figure 4-3) of the frequency divider is:

$$\frac{E_1}{E_3} = \frac{1}{3 + j \left( \frac{\omega}{\omega_o} - \frac{\omega_o}{\omega} \right)}$$

At the operating frequency,  $\omega = \omega_o$ , therefore:

$$\frac{E_1}{E_3} = \frac{1}{3}$$

This means that at the operating frequency of the oscillator, one-third of the signal applied to the divider appears at the input to the amplifier. To sustain oscillations in any oscillator, a loop gain of unity is necessary, i.e., the gain from any one point in the circuit, around the loop and back to that same point, must be equal to one. Thus:

$$G_L = G_A \times \frac{E_1}{E_3} = 1$$

where

$G_L$  = loop gain

$G_A$  = amplifier gain

$\frac{E_1}{E_3}$  = divider gain

$$\text{Or: } G_A = \frac{G_L}{E_1/E_3} = \frac{1}{1/3} = 3$$

The amplifier then, must have a gain of 3 to preserve unity gain in the loop and, therefore, to sustain oscillation at  $\omega_o$ .

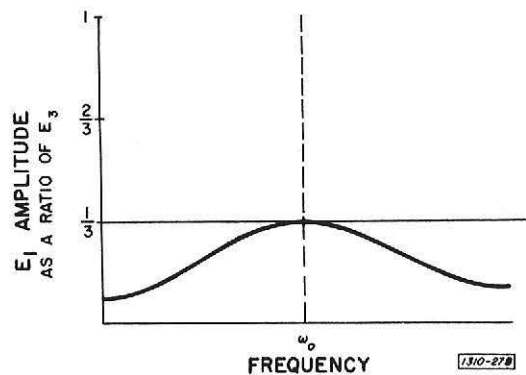
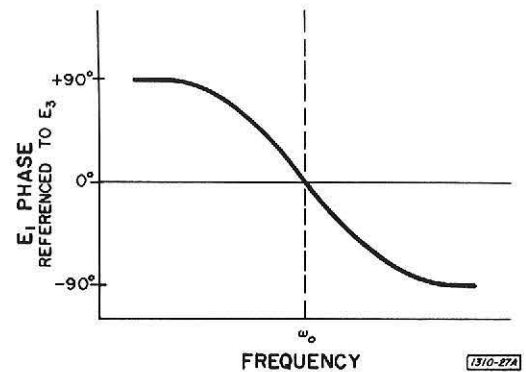


Figure 4-3. Typical transfer function of a Wien bridge.

### 4.2.3 Amplitude Stabilization. Figures 4-2, 4-4 and 4-5.

Under ideal conditions, the only requirement for stable oscillations is a constant loop gain of 1, i.e., if the amplifier gain and impedance-divider gain remained constant with changes in frequency, circuit parameters, and environment, only the frequency-determining impedance divider would be necessary. However, changes in frequency and environment affect the gain, phase, and terminal impedance of the amplifier and slight unbalances in C and R affect the gain (voltage ratio) of the divider. These factors change the loop gain and would cause the oscillator amplitude to increase or decrease.

For example, if these anomalies resulted in a momentary decrease in  $E_3$ ,  $E_1$  would decrease, further decreasing  $E_3$ , and so on until the amplitude became zero. Conversely if  $E_3$  were to increase momentarily,  $E_1$  would increase, further increasing  $E_3$  until the amplifier saturated. This latter case can be easily demonstrated by removing the thermistor ( $R_1$ ) and monitoring the output. The output will be square waves instead of sinewaves and will not necessarily be at the frequency indicated by the frequency selectors.

To overcome this problem a divider  $R_1$  and  $R_2$  (Figure 4-2) is used. The input to the amplifier is the difference between the output of the two dividers. ( $E_2$  is negative feedback and if it increases,  $E_3$  decreases.) Note that the amplifier is across the bridge as is the detector/amplifier of any bridge.

The transfer function of the resistance divider is the simple voltage ratio:

$$\frac{E_2}{E_3} = \frac{R_2}{R_1 + R_2}$$

The loop gain is now:

$$G_L = G_A \left( \frac{E_1}{E_3} - \frac{E_2}{E_3} \right) \text{ or}$$

$$G_L = G_A \left[ \frac{1}{3 + j \left( \frac{\omega}{\omega_0} - \frac{\omega_0}{\omega} \right)} - \frac{R_2}{R_1 + R_2} \right]$$

and must still be equal to 1 for stable amplitude.

In order to stabilize  $E_3$  with changes in frequency and amplifier gain, a negative-temperature-coefficient thermistor is used for  $R_1$ . An ordinary resistor is linear, its resistance remains essentially constant as the current through it changes. But, the thermistor used in the Type 1316 is non-linear, its resistance decreases as the current through it increases.

To explain the action of the thermistor, the amplifier is shown as a current source (Figure 4-4) with a certain current-delivering capability represented by the constant voltage (+V) and a resistor ( $R_G$ ).

Note that the same voltage,  $E_3$ , is across all three legs (impedance divider, resistance divider, and  $R_L$ ):

$$E_3 = E_2 + E_4$$

$$E_2 = IR_2$$

$$E_4 = IR_1$$

When an ordinary resistor is used for  $R_1$ , the voltage drops across  $R_1$  and  $R_2$  change in direct proportion to the current through them, which in turn, changes in direct proportion to the gain (current-delivering capability) of the amplifier. In Figure 4-5, the result of increasing current ( $I$ ), is shown. Since  $E_3$  is the sum of  $E_2$  and  $E_4$ ,  $E_3$  rises linearly as the gain of the amplifier rises.

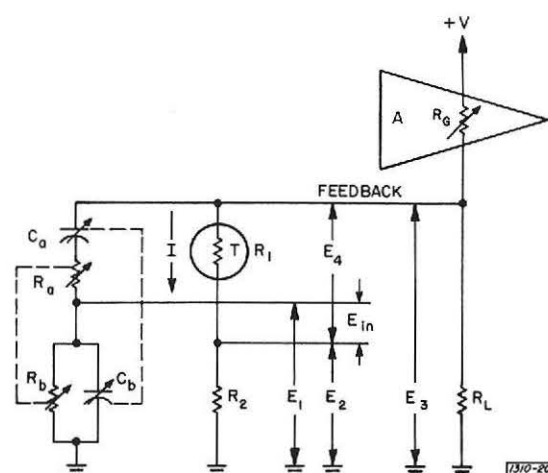


Figure 4-4. Schematic diagram of a typical Wien bridge showing the amplifier as a current source.

When a thermistor is used for  $R_1$ , and its resistance characteristic is chosen so that the slope of its  $IR$  drop is equal to the slope of the  $IR_2$  drop, but of opposite sign,  $E_3$  remains constant with changes in amplifier gain.

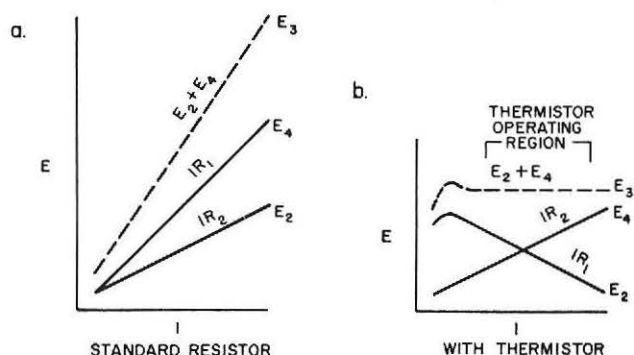


Figure 4-5. Graphical representation of the current ( $I$ ) through  $R_1$ : a. using a standard resistor; b. using a thermistor.

## 4.3 CIRCUIT DESCRIPTION.

### 4.3.1 General.

As previously mentioned, the heart of the 1316 circuitry is a modification of the Wien-bridge oscillator. The modification consist of a conductance-tuning method as opposed to resistance tuning. Para. 4.3.2 presents a basic circuit description of this oscillator in terms of conductance.

### 4.3.2 Modified Wien-Bridge Oscillator.

Figure 4-1.

An incremental variation in the frequency of a Wien bridge oscillation may be effected by shunting the lower conductance arm of the bridge ( $G$ ) by a variable conductance ( $g$ ), whose value is variable between 0 and  $g$ . Since it is difficult, if not impractical, to reciprocally vary resistance

to infinite values, a variation in effective conductance can be produced by varying the effective voltage across it.

In this instrument  $\alpha$  varies from 0 to 1, an easy task for a variable-voltage. The voltage across the conductance ( $g$ ) is:

$$V - (1 - \alpha)V = \alpha V$$

$(1 - \alpha)V$  is derived from the voltage  $V$  at the negative input terminal of the oscillator amplifier (A1, Figure 4-1). The effective conductance ( $g$ ) is:

$$\frac{I_g}{V_g} = \frac{\alpha V_g}{V} = \alpha g$$

If we sum  $G$  and  $\alpha g$  and substitute into the equation for a Wien-bridge oscillator we have:

$$\omega_o = \sqrt{\frac{G(G + \alpha g)}{C^2}}$$

and by rearranging

$$\begin{aligned}\omega_o &= \frac{1}{C} \sqrt{G^2 + \frac{G^2 \alpha g}{G}} \\ &= \frac{1}{C} \sqrt{G^2 \left(1 + \frac{\alpha g}{G}\right)} \\ &= \frac{G}{C} \sqrt{1 + \frac{\alpha g}{G}}\end{aligned}$$

It can be shown that:

$$\sqrt{1 + \sigma} \approx 1 + \frac{\sigma}{2} \text{ when } \sigma \ll 1$$

and since  $g \ll G$   
then

$$\begin{aligned}\omega_o &= \frac{G}{C} \sqrt{1 + \frac{\alpha g}{G}} \\ &\approx \frac{G}{C} \left(1 + \frac{\alpha g}{2G}\right) \\ &\approx \frac{1}{C} \left(G + \frac{\alpha g}{2}\right)\end{aligned}$$

From  $\omega_o \approx 1/C (G + \alpha g/2)$  it can be seen that  $\alpha g$  produces an incremental variation in the product  $\omega_o$ . The value of the variable ( $\alpha$ ) is determined by A-R14, the least-significant-digit frequency selector. The term  $G$  is varied by means of parallel-resistor combinations selected by the first two frequency selectors, A-S3 and A-S4. Frequency range is determined by the value of  $C$ , which is selected by A-S5.

#### 4.3.3 Output Power Amplifier.

The final output power from the instrument is transformer coupled from a class-B power amplifier consisting of Q13-Q18.

Signal from the oscillator section is amplitude controlled by the OUTPUT ADJUST control (A-R27) and applied to the base of the input-voltage amplifier Q13. The collector output of Q13 is applied to the base of Q14 and the collector circuit of this stage feeds the final output stages. The collector load of Q14 consists of R43 and R44; the junction is bootstrapped to the amplifier output via C35, to provide ac multiplication of the impedance of R43.

The two halves of the class-B output stage consist of composite states Q15-Q18. Each pair is connected as a high-input-impedance, unity-gain stage. Final output is provided by the collectors of Q17 and Q18. These two stages also drive the feedback divider R40 and R39, whose values are chosen to provide a closed-loop gain of 4.

Idle current in Q17 and Q18, necessary to minimize crossover distortion, is maintained by the voltage drop across CR11 and CR12. This voltage is equal to that across R47 and R48 plus the base-emitter drop of Q15 and Q16.

Diodes CR9, CR10, CR13, CR14, CR19, and CR20 provide protection from transients occurring during the oscillator start-up period.

R41, C34 and R42, C36 modify the high-frequency loop gain to maintain loop stability. R42 is variable to adjust the time constant of this network to compensate for variations in winding capacitance of the low-frequency transformer T2. This transformer has some effect on the high-frequency characteristics of the feedback loop.

#### 4.3.4 Autotransformer Output.

One of three output transformers is used to couple the POWER OUTPUT jack to the power-amplifier output. Each transformer is tapped to provide a choice of voltage. T2 operates between 10-100 Hz, T3 between 100 Hz – 10 kHz and T4 between 10 kHz – 100 kHz. Resistance is added to the normal winding resistance to define the maximum short circuit current at each tap.

#### 4.3.5 Meter Circuit.

If the gain of A (comprised of Q19-Q21) is large,  $V_{FB}$  (base of Q20) will be very close to  $V_{IN}$  (base of Q19) and the effect of the nonlinear characteristic of the rectifier at low levels will be very small. The half-cycle pulses of current, flowing through R61 and R62, set the  $I_m$  of system; the average value of the full-wave rectified pulses of current is indicated by the meter A-M1. The time constant of C42, & C43 and the meter resistance is long enough to permit steady readings at low frequencies.

## 4-4 THEORY

#### 4.3.6 Reference Outputs.

**Figure 4-1.**

Two reference outputs (IN-PHASE and QUADRATURE) were built into the 1316 oscillator to facilitate its use with the double-phase-sensitive 1238 Detector.

The IN-PHASE output is derived directly from the oscillator output and is in-phase with the output voltage, disregarding phase errors in the power amplifier and output transformer. The QUADRATURE output lags the IN-PHASE output by  $90^\circ$  and is derived by sampling the current flowing through  $C_b$  (Figure 4-1).

By making the gain of  $A_3$  large most of the input current is forced to flow through  $R_F$ . This provides an output voltage proportional to the input current. However, since the magnitude of  $I$  depends on the frequency setting and the value of  $C$  for the range in use,  $R_F$  must be varied with frequency to maintain a constant quadrature output. This is accomplished with conductance decades A-R102—A-R109, which are controlled with A-S3 and A-S4 respectively.

#### 4.3.7 Power Supply.

Power for all sections of the oscillator is obtained from a regulated supply consisting of Q1, A-Q2, A-Q3, Q4 and Q5. The regulator is on the negative or return side of the supply.

A fraction of the output voltage is compared, via Q5, with the 6.8-V Zener-diode reference. The collector current of Q5 varies with the difference between the two voltages and is amplified by Q1. The current source (Q4) and the Darlington pair (A-Q2 and A-Q3) comprise the collector load of Q1. Variations of the voltage at the Darlington-pair input (AT5) cause the output voltage at WT10 to change in such a manner that any original error is vastly reduced.

### 4.4 SYNCHRONIZATION.

#### 4.4.1 General.

The method used to synchronize the oscillator is commonly called injection locking and is the same mechanism that causes some oscillators to beat with the power-line frequency or to lock with it.

Injection locking is a natural extension of the normal oscillator operation and, except for an isolating resistor and capacitor, is dependent only upon the proper operation of the oscillator. The naturalness of the extension is apparent when it is realized that normal operation is, in fact, only an amplitude-regulated, frequency-selective regeneration of noise sources within the oscillator. Synchronization is an amplitude-regulated, frequency-selective regeneration of an externally applied signal.

There are three important characteristics associated with the use of the EXT SYNC feature:

- Output.
- Input synchronizing or phase locking.
- Input-frequency selectivity or filtering.

These characteristics are discussed in the following paragraphs.

#### 4.4.2 Output Characteristic.

A nominal 0.3-V rms output signal, behind  $27\text{ k}\Omega$ , is available from the EXT SYNC jack. The level of this sync output signal is independent of the output voltage controls or the output load. One side of the sync output is chassis ground and the signal is in phase with the POWER OUTPUT.

The sync output will drive any size load without increasing the oscillator distortion. However, only high-impedance loads are recommended where full frequency accuracy is required. The worst-case load, a short circuit, will decrease the frequency by 1 or 2%.

#### 4.4.3 Input Synchronizing Characteristic.

The oscillator frequency can be synchronized or locked with any input signal that is applied to the EXT SYNC jack, if the oscillator is tuned to the approximate frequency of the input. The range of frequencies, over which this synchronization will take place, is a function of the amplitude of the frequency component to which the oscillator locks. It increases approximately linearly, and produces a lock range of approximately  $\pm 1\%$  for each volt input.

The oscillator will maintain synchronization if either the oscillator frequency or the synchronizing frequency is changed, within the lock range. However, there is a time constant of about one second associated with the synchronizing mechanism. Thus, if the amplitude or frequency of the sync signal or the frequency setting of the oscillator is changed, there will be transient changes in amplitude and phase for a few seconds before the oscillator returns to steady-state synchronization.

This time constant is caused by the thermistor amplitude regulator as it readjusts to the different operating conditions. The thermistor is sensitive only to changes in average values of frequency or amplitude where the averaging time is in the order of seconds. Hence, frequency-modulated and amplitude-modulated sync signals, which have a constant average value of frequency and amplitude over a period of a second or less, are not affected by this time constant. They are affected by the equivalent time constant of the filter characteristic, discussed in para. 4.4.4.

For slow changes in frequency or amplitude, the lock range and the capture range are the same; i.e., the frequency or amplitude at which the oscillator goes from the synchronized state to the unsynchronized state is the same as when it goes from the unsynchronized state to the synchronized state. Synchronization is a true-phase-lock, because it maintains a constant phase difference between the sync input and the oscillator output. The phase difference is  $180^\circ$  when the dialed frequency is identical to

the sync frequency and approaches  $\pm 90^\circ$  as the frequency approaches the limits of the lock range (see Figure 4-6). Note that the phase difference is also a function of the amplitude of the sync signal, because the lock range is a function of the amplitude.

The input impedance at the EXT SYNC jack is  $27\text{ k}\Omega$  at all frequencies except the synchronizing frequency. At the synchronizing frequency, the impedance, in general, is complex and can vary over a wide range, including negative values because the connector is also a source at the synchronizing frequency.

Since the connector is simultaneously a source and an input, care should be taken to ensure that the sync-output voltage does not interfere with the drive source. The high output impedance of the EXT SYNC jack makes it easy to minimize the sync-output signal. For example, if a  $600\text{-}\Omega$  source is used less than  $20\text{ mV}$  will appear across the source.

#### 4.4.4 Input Frequency Selectivity.

The RC network in the oscillator, used to determine the frequency of oscillation can also be used to filter signals applied externally. Signals applied to the EXT SYNC jack

that are close to the frequency of synchronization will be amplified in the output, but those frequencies outside the lock range will be reduced. The intrinsic selectivity or  $Q$ , of this filter is constant and is determined only by the RC Wien network.

The voltage gain between the EXT SYNC jack and the OUTPUT jack is constant at any output level and output frequency, except the frequency of oscillation, regardless of the amplitude of the incoming signal.

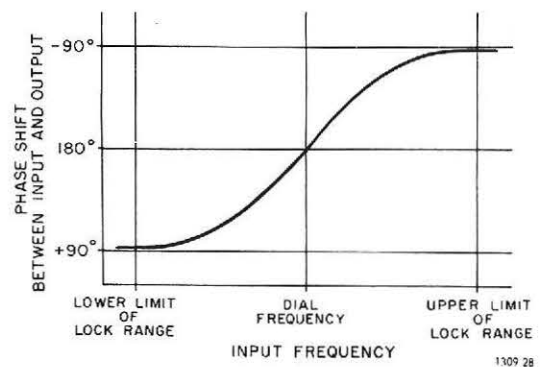


Figure 4-6. Phase shift over the lock range.



---

# Service and Maintenance—Section 5

---

5.1 GR FIELD SERVICE . . . . .	5-1
5.2 MINIMUM PERFORMANCE STANDARDS . . . . .	5-1
5.3 ASSEMBLY/DISASSEMBLY PROCEDURES . . . . .	5-5
5.4 MAJOR COMPONENTS . . . . .	5-5
5.5 SERVICING THE ETCHED-CIRCUIT BOARD . . . . .	5-5
5.6 CALIBRATION PROCEDURES . . . . .	5-5
5.7 GENERAL MAINTENANCE . . . . .	5-6
5.8 TROUBLE ANALYSIS . . . . .	5-6

## WARNING

Potentially lethal shock hazards exist in the circuitry inside. If troubleshooting is necessary, it should be performed by qualified personnel familiar with the hazard.

### 5.1 GR FIELD SERVICE.

The stated warranty attests the quality of materials and workmanship in our products. When difficulties do occur, our service engineers will assist in any way possible. If the difficulty cannot be eliminated by use of the following service instructions, please write or phone the nearest GR service facility (see back page), giving full information of the trouble and of steps taken to remedy it. Describe the instrument by type number (front panel), serial, and ID numbers (rear panel).

**Instrument Return.** Before returning an instrument to General Radio for service, please ask our nearest office for a "Returned Material" number. Use of this number in correspondence and on a tag tied to the instrument will ensure proper handling and identification. For instruments not covered by the warranty, a purchase order should be forwarded to avoid unnecessary delay.

For return shipment, please use packaging that is adequate to protect the instrument from damage, i.e., equivalent to the original packaging. Advice may be obtained from any GR office.

### 5.2 MINIMUM PERFORMANCE STANDARDS.

#### 5.2.1 General.

The equipment, methods, and criteria for verifying the specified performance of the oscillator are presented in the following paragraphs. Table 5-1 lists the necessary equipment and Figure 5-1 shows a typical setup for the service and maintenance checks.

#### 5.2.2 Power-Circuit Check.

- Connect the oscillator under test to a metered autotransformer set to 0-V.
- Set the oscillator rear-panel power-selector slide switch to 100-125 V, and power switch on.
- Slowly increase the line voltage to 115 V. The input power should be 5 W (nominal).
- Connect the 1807 from AT3 to chassis. (See Figure 5-2).
- Vary the line voltage from 100 to 125 V. The 1807 should read between 19.7 and 20.3 V dc.
- Reset the line voltage to 115 V and maintain this voltage for all further checks.

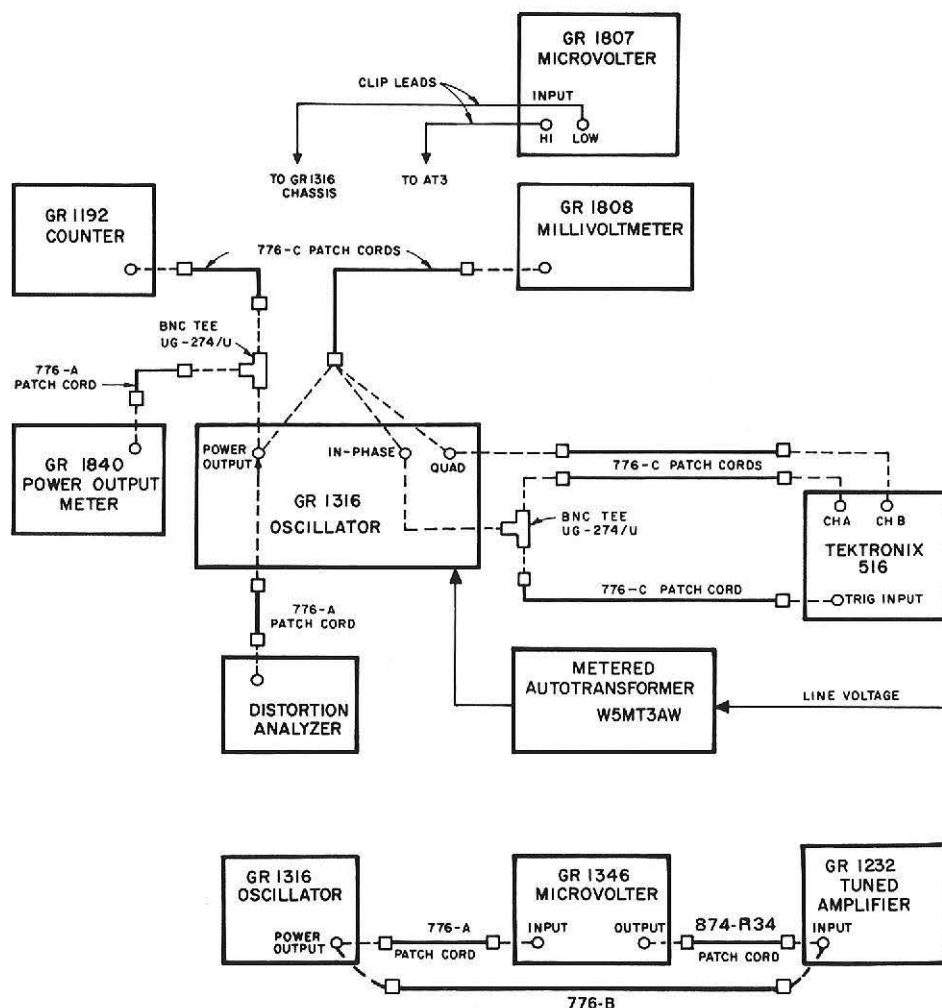


Figure 5-1. Test-equipment setup.

### 5.2.3 Frequency Accuracy and Range.

The output frequency of this oscillator is typically  $\pm 1\%$  of the value set by the FREQUENCY selectors; the range is 10 Hz to 100 kHz. Following is a procedure that can be used to check both the accuracy and the range:

a. Connect INPUT A of the 1192 Counter to the POWER OUTPUT jack (Figure 5-1). Set the counter controls to measure period with a  $100\text{-}\mu\text{s}$  gate time.

b. Set the 1316 controls as follows:

POWER switch	POWER
FREQUENCY Selectors	10.0 Hz
OUTPUT VOLTAGE RANGE control	.15
OUTPUT ADJUST Control	MAX

c. Observe the counter visual register. It should display a reading within the limits specified in Table 5-2.

d. Set the oscillator FREQUENCY selectors to 1 kHz and adjust the counter controls to measure frequency.

e. Again observe the counter visual register and check Table 5-2 for the specified frequency limits.

### 5.2.4 Output-Voltage and Power Levels.

**Output-Voltage Level.** The following procedure can be used to check the oscillator output-voltage:

a. Set the oscillator controls as follows:

FREQUENCY SELECTORS	1 kHz
OUTPUT VOLTAGE RANGE	1.5 V
OUTPUT ADJUST	MAX

b. Set the Type 1808 AC Millivoltmeter to the 1.5-V range.

#### CAUTION

Make sure that the oscillator is set to the 1.5-V range before connecting the voltmeter.

c. Connect the Millivoltmeter to the POWER OUTPUT jack (Figure 5-1).

d. Observe the voltmeter indication — it should be  $\geq 1.25$  V.



Table 5-1

## TEST EQUIPMENT

Item	Requirements	Recommended Type*
Counter	Range: 0.1 – 200 V, 10 Hz – 100 kHz	GR 1192
Dc Microvoltmeter	Range: up to 100 V, 1% accuracy	GR 1807
Ac Millivoltmeter	Range: 0.5 – 300 V, 1% accuracy	GR 1808
Power Meter	Range: 16 W, 40 Hz to 20 kHz	GR 1840
Oscilloscope	Bandwidth: 15 MHz Deflection factor: 5 V/cm	TEKTRONIX† 516 with Type 1A1 dual-trace plug-in unit.
Patch Cord	874 to 274	
Probe	X10, low capacitance	Tektronix P6008
Patch Cord	Double plug to BNC plug, 3 ft.	776-A
Patch Cord	874 to BNC	776-B
Patch Cord	BNC plug to BNC plug, 3 ft. (3)	776-C
Patch Cord	274 to 274, 3 ft.	274-NP
Tee	BNC each end	Type BNC (UG-274/U)
Tuned Amplifier and Null Detector	Range: 20 Hz – 2 kHz	GR 1232
Audio Frequency Microvolter	Output: 1 V, sensitivity: 15 $\mu$ V min.	GR 1346
Distortion Meter	Distortion level down to 0.1%	HP 332
Metered Auto-transformer	Output Voltage: 0-140 V, single phase, 50-60 Hz	

\* Or equivalent

† Registered trademark, Tektronix, Inc., Beaverton, Ore.

To check the other output-voltage ranges, adjust the 1808 voltmeter accordingly, and set the OUTPUT VOLTAGE RANGE switch to the desired range. The value indicated by the voltmeter should be as listed in Table 5-3.

**Output Power Level.** The following procedure can be used to check the output-power level:

a. Connect the Type 1840 Output Power Meter to the POWER OUTPUT jack. (Figure 5-1).

b. Adjust the power-meter controls to conform to any of the conditions depicted by the **1840 Impedance and Nominal Output Power**, columns of Table 5-3.

c. Adjust the oscillator controls as follows:

FREQUENCY Selectors . . . . . 1 kHz

OUTPUT VOLTAGE RANGE . . . . . Desired Range

OUTPUT ADJUST . . . . . MAX

d. Observe the power-meter indications. They should be as listed in Table 5-3.

The lowest impedance obtainable from the 1840 is 0.6  $\Omega$ , which was suggested as the nominal load for the oscillator on its lowest-voltage range (Table 5-3). If the

output impedance for this range is matched with 0.25  $\Omega$ , 1.6-W, out can be obtained.

### 5.2.5 Amplitude v Frequency Response.

The response (o.c.) should be constant within  $\pm 2\%$  from 10 Hz – 50 kHz, for frequencies > 50 kHz the specification is  $\pm 5\%$ .

Table 5-2

## OSCILLATOR OUTPUT-FREQUENCY-RANGE LIMITS

Frequency-Selectors Setting	Output-Frequency Limits
10 Hz	101 – 99ms
100 Hz	10.1 – 9.9ms
1 kHz	990 – 1010 Hz
10 kHz	9900 – 10100 Hz
100 kHz	99000 – 101000 Hz

Table 5-3

OUTPUT-VOLTAGE AND POWER LEVELS			
Output V-Range	Open-Circuit Voltage	1840 Impedance	Nominal Output Power-W
1.5	≅ 1.25	0.6 $\Omega$	0.66
5	≅ 4	2.5 $\Omega$	1.6
15	≅ 12.5	25 $\Omega$	1.6
50	≅ 40	250 $\Omega$	1.6
150	≅ 125	2.5 k $\Omega$	1.6

Following is a procedure that can be used to check the response:

- Set the 1808 to the 15-V range.
- Connect the 1808 to the oscillator POWER OUTPUT.
- Set the oscillator frequency for 1 kHz and adjust the output voltage controls for 10-V out, as indicated by the 1808.
- Set the oscillator frequency controls for any frequency within the oscillator range and note the 1808 voltage indication. It should be within  $\pm 2\%$  of the voltage set in step c, for frequencies  $\leq 50$  kHz,  $\pm 5\%$  for frequencies  $> 50$  kHz.

#### 5.2.6 Hum.

The following procedure can be used to check for 60-Hz hum at the output of the power amplifier:

#### NOTE

This check must be made with the instrument in its cabinet.

- Connect the instruments as shown in Figure 5-1.
- Set the oscillator for a 1-V, 60 Hz output.
- Set the Type 1346 Audio-Frequency-Microvolter controls as follows:

METER FULL SCALE . . . . . 1 V  
 FULL SCALE OUTPUT VOLTAGE . . . . . 10 mV  
 LEVEL . . . . . 10 (full scale)  
 OUTPUT Switch . . . . . ON

- Set the Type 1232 Tuned-Amplifier-and-Null-Detector controls as follows:

METER Switch . . . . . LINEAR  
 FILTER FREQUENCY . . . . . 20-200 Hz  
 FILTER TUNING . . . . . 6

- Adjust the 1232 GAIN and FILTER-TUNING controls for a peak reading of 100 on the linear (black) scale. After this adjustment is completed the amplifier is calibrated for 10 mV full scale. **Be careful not to change these control adjustments.**

- Remove the 1346 from the setup.
- Set the oscillator controls as follows:  
 FREQUENCY SELECTORS . . . . . 1 kHz  
 OUTPUT ADJUST . . . . . Fully ccw  
 OUTPUT VOLTAGE RANGE . . . . . 150 V

#### CAUTION

Before reconnecting the 1232, make sure that the oscillator OUTPUT ADJUST control is fully ccw.

- Connect the oscillator POWER OUTPUT directly to the 1232 INPUT connector, with a 776-B Patch Cord.
- The oscillator OUTPUT-VOLTAGE-RANGE control can now be set to any of its five positions and the corresponding hum voltage read from the 1232 meter. The voltages should not be greater than those specified in Table 5-4.

#### 5.2.7 Distortion.

Output distortion can be checked by the following procedure:

- Set the oscillator OUTPUT VOLTAGE RANGE and ADJUST controls for maximum output.
- Connect the HP 332 Distortion Analyzer to the oscillator output as shown in Figure 5-1.
- Adjust the analyzer controls to measure distortion.
- Refer to the OUTPUT DISTORTION LIMITS curve contained in the specifications near the front of this manual. The measured value of distortion should conform to the curve.

Table 5-4

CALIBRATED 1232 MEASUREMENTS	
Oscillator Voltage Range	Hum Voltage
150	4.5 mV
50.0	1.5 mV
15.0*	450 $\mu$ V
5.0	150 $\mu$ V
1.5	45 $\mu$ V

\*Recalibrate 1232 for 1mV full scale using 1346.

#### 5.2.8 Reference Outputs.

**Phase Relationship.** The QUADRATURE output lags the IN-PHASE output by approximately  $90^\circ$ . Following is a method that can be used to check this phase relationship:

- Connect the oscilloscope as shown in Figure 5-1.
- Adjust the scope controls as follows:  
 TRIGGERING SELECTOR . . . . . AUTO  
 TIME/CM . . . . . 1 ms  
 CH A VOLTS/CM . . . . . 10  
 CH B VOLTS/CM . . . . . 10
- Set the oscillator controls for any output.
- Using the position controls, position the scope pattern so that the graticule can be used as a reference.
- Observe the scope pattern carefully. Notice that the QUADRATURE output lags the IN-PHASE output by approximately  $90^\circ$ .

**Output Level.** The open-circuit outputs at the REFERENCE OUTPUTS jacks are constant over the range of the oscillator. Following is a procedure that can be used to check the level of these outputs:

- a. Set the oscillator controls for any output.
  - b. Connect the 1808 Millivoltmeter to the IN-PHASE output.
  - c. Adjust the voltmeter controls to measure 1.5 V, ac.
  - d. Observe the voltmeter indication — it should be  $1.25 \pm 0.25$  V.
- To measure the QUADRATURE output level, connect the 1808 to the QUADRATURE output and repeat steps b-d above.

**Output Distortion.** To make output distortion checks of the REFERENCE OUTPUTS, use the same procedure presented in para. 5.2.7 with one exception. The distortion analyzer is connected to either the IN-PHASE or QUADRATURE output jack.

**Amplitude v Frequency Response.** With the exception of step b, para 5.2.5 can be used to make response checks of the REFERENCE OUTPUTS. Regarding step b, the 1808 must be connected to either the IN-PHASE or the QUADRATURE output jack, depending on which is being checked.

The output level for both outputs is  $1.25 \pm 0.25$  V and the measuring equipment will have to be adjusted accordingly.

### 5.3 ASSEMBLY/DISASSEMBLY PROCEDURES.

#### 5.3.1 Knob Removal.

##### CAUTION

Do not use a screwdriver or other tool to pry off the knob if it is tight. Do not lose the spring clip in the knob while it is off.

To remove the knob from a front-panel control, to replace a damaged knob or the associated control, proceed as follows:

- a. Grasp the knob firmly with dry fingers, close to the panel, and pull the knob straight away.
- b. Observe the position of the setscrew in the bushing when the control is fully ccw.
- c. Release the setscrew with a 5/64-in. Allen wrench; pull the dial/bushing off the shaft.
- d. Remove and retain the black felt washer, behind the dial/knob assembly (FREQUENCY controls only).

##### NOTE

To separate the bushing from the knob, if for any reason they should be combined off of the shaft, drive a machine tap a turn or two into the bushing to provide sufficient grip for easy separation. If the retention spring in the knob falls out, reinstall it in the interior notch with the small slit in the inner diameter of the wall.

#### 5.3.2 Knob Installation.

To install a knob assembly on the control shaft:

- a. Place the black felt washer over the control shaft.
- b. Mount the dial bushing on the shaft.
- c. Orient the setscrew properly on the bushing, with respect to step b in para. 5.3.1 and lock the setscrew with an Allen wrench.

##### NOTE

If the end of the shaft protrudes through the bushing, the knob cannot seat properly.

- d. Place the knob on the bushing with the retention spring opposite the setscrew.
- e. Push the knob in until it bottoms and pull it slightly to check that the retention spring is seated in the groove in the bushing.

### 5.4 MAJOR COMPONENTS.

Figure 5-2 identifies the major components of the oscillator with their corresponding locations.

### 5.5 SERVICING THE ETCHED-CIRCUIT BOARD.

The 1316 Oscillator has one etched-circuit board.

When removing or replacing parts, use a low-heat soldering iron and a small-diameter rosin-core solder. Do not subject the parts or board to excessive or prolonged heat. If a part is obviously faulty or damaged, clip the leads close to the part and then remove the leads from the circuit side.

### 5.6 CALIBRATION PROCEDURES.

#### 5.6.1 General.

Calibrate the oscillator whenever minimum performance standards, operating procedures, trouble analysis, or maintenance checks indicate that the instrument is out of calibration.

#### 5.6.2 Power-Supply Adjustment.

To adjust the power-supply, B+ voltage, connect the 1807 between TP3 (Figure 5-2) and the chassis for a dc measurement. Use a pair of short clip leads. Adjust R11 for a reading of 20 V.

#### 5.6.3 Frequency Stability.

Following is a frequency-stability adjustment procedure:

- a. Set the oscillator controls as follows:

FREQUENCY Selectors	50 Hz*
OUTPUT VOLTAGE RANGE	150 V
OUTPUT ADJUST	0

- b. Connect a short across the POWER OUTPUT. (Use a short clip lead.)

\* The third digit must be set to the detented zero-position.

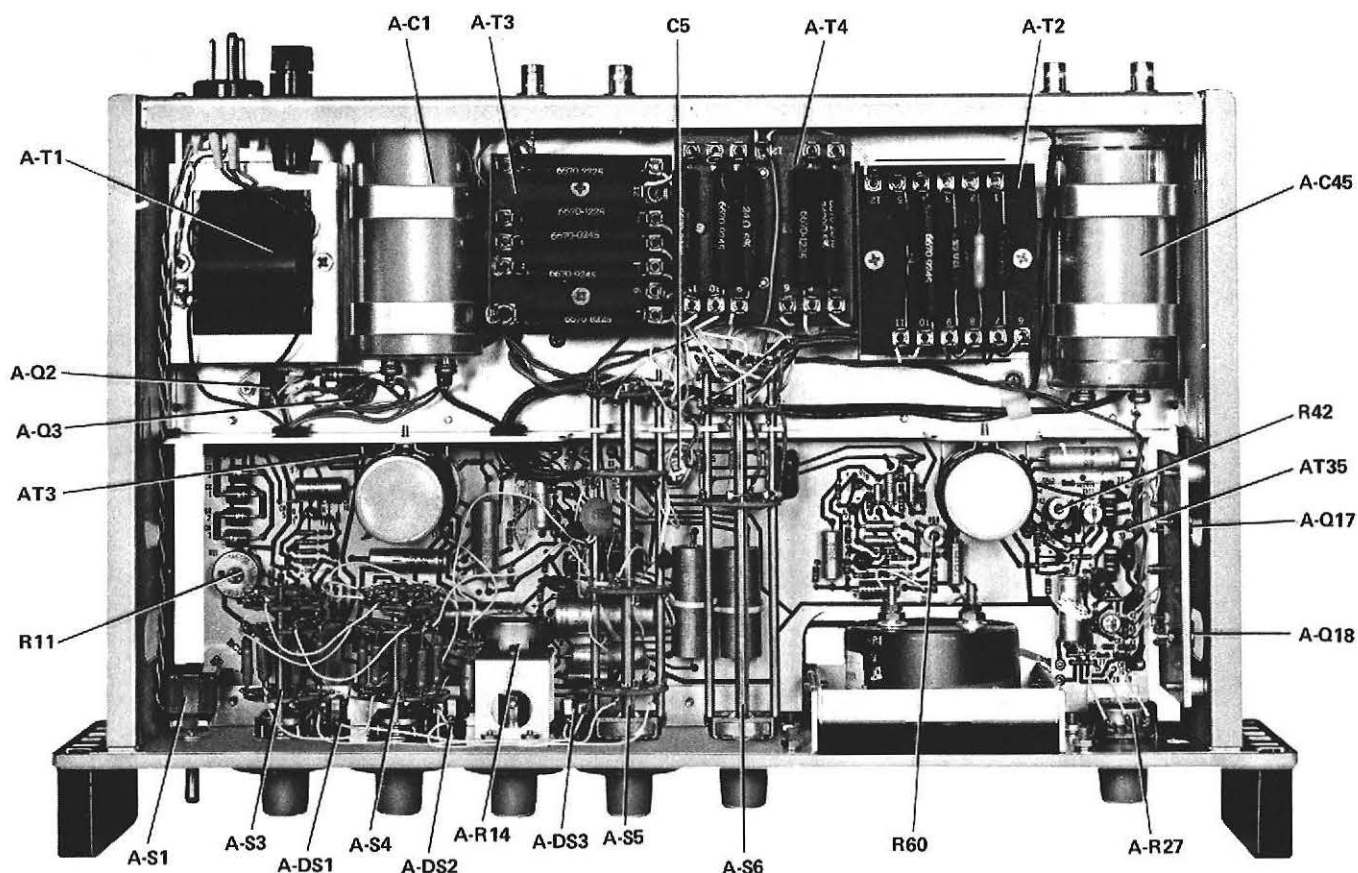


Figure 5-2. Top, interior view.

- c. Connect the oscilloscope probe to AT35 (Figure 5-2).
- d. Set the OUTPUT ADJUST control to MAX.
- e. Adjust the oscilloscope controls to obtain a sinewave pattern; observe the pattern carefully for aberrations of the signal.
- f. Adjust R42 (Figure 5-2) to eliminate the aberrations.
- g. Rotate the FREQUENCY range selector from the Hz to the kHz position. Slightly readjust R42 to eliminate any aberrations that reappear.

#### 5.6.4 Meter Accuracy.

The meter accuracy can be adjusted by the following procedure:

- a. Set the oscillator controls for a 100-V, 1-kHz output.
- b. Set the 1808 to the 150-V range and connect it to the oscillator POWER OUTPUT.
- c. Adjust the OUTPUT ADJUST control for a 100-V indication on the 1808.
- d. Adjust R60 (Figure 5-2) so that the panel-meter indication is the same as that of the 1808  $\pm 1\%$ .

#### 5.6.5 Frequency Accuracy.

The highest frequency range is adjusted with the variable capacitor C5. All other ranges are adjusted with fixed-value capacitors chosen at the factory.

Following is a recommended adjustment procedure for the highest frequency range:

- a. Set the oscillator controls for a 4-V, 50-kHz output.
- b. Adjust the counter controls to measure frequency and connect it to the oscillator POWER OUTPUT.
- c. Adjust C5 to obtain a counter reading of 50.02 kHz.

### 5.7 GENERAL MAINTENANCE.

#### 5.7.1 Lamp Replacement.

To replace the decimal-point lamps, slide the metal clip off the back of the metal holder and remove the lamp. Insert a new lamp (Chicago Miniature Lamp Works, No. 327 or equivalent), and replace the clip.

#### 5.7.2 Panel Finish.

If the front panel becomes marred or scratched, retouch with a light gray paint that conforms with the Federal Standard 595 (gray, 26492).

### 5.8 TROUBLE ANALYSIS.

#### 5.8.1 General.

Isolating a symptom to a particular circuit can be done by checking for the presence or absence of signals at the rear-panel output jacks. For example, if the instrument controls are adjusted for a 10.0 kHz, 10-V output, the

front-panel-meter indication should be 10 V. If there is no indication, check the POWER OUTPUT. A voltage here indicates a problem in the meter circuit. If no voltage is present, check the IN-PHASE output. There should be  $1.25 \pm 0.25$  V present regardless of the frequency and voltage-control settings. The correct voltage indicates a problem in the output power amplifier. An incorrect voltage indicates an oscillator or power-supply problem. The decimal-point lamps are connected directly to B+; therefore, if they are on the power supply is working.

The next step should be to check resistance and/or voltages within the circuit suspected of having a malfunction. A functional block diagram (Figure 4-1) and the schematic diagram (Figure 5-5) are supplied as an aid for localizing problems.

#### 5.8.2 Incorrect Output Frequency.

An incorrect output frequency should be isolated to a particular range, and if possible, to a particular step within a range. If the output is incorrect for one of the frequency ranges, the capacitors for that range should be checked. If the output is incorrect for a step within one of the ranges, the resistors for that step should be checked. (Refer to the schematic diagram Figure 5-3.)

#### 5.8.3 Incorrect Output Voltage.

If the POWER OUTPUT voltage is incorrect, check the IN-PHASE output jack to be  $1.25 \pm 0.25$  V, rms. An incorrect voltage at this jack indicates either a power-supply or an oscillator problem. The next step should be to check the 20-V, B + voltage. If it is incorrect, the problem can be isolated by making resistance and voltage checks in the power supply. If it is correct, the problem is in the oscillator and the first component to suspect is the thermistor.

A correct IN-PHASE, output voltage indicates that the problem is between the power-amplifier input and the output from the instrument. Therefore, check the voltage at AT35 to be approximately 5 V, rms. An incorrect voltage here indicates output-power-amplifier problems. A correct voltage indicates an output-transformer or power resistor problem. (Refer to the schematic diagram Figure 5-3.)

#### 5.8.4 Excessive Distortion.

If there is excessive distortion at the POWER OUTPUT, check the IN-PHASE output. (Refer to the OUTPUT DISTORTION LIMITS curve contained in the specifications near the front of this manual.) Excessive distortion here indicates that the problem is in the oscillator and is probably caused by the thermistor (R23). Otherwise the problem is probably caused by a defective component in the power amplifier.

#### 5.8.5 Excessive Hum.

If the hum specification is exceeded at the POWER OUTPUT, the B + voltage should be checked for ripple. Ripple voltages  $> 100$  mV pk-pk can contribute to excessive hum. Components to suspect are filter capacitors C1, C4, and CR1-CR4.

#### 5.8.6 Low Output from EXT SYNC.

The most common cause of a low EXT-SYNC output is capacitance loading of the signal. Output impedance is  $47 \text{ k}\Omega$ ; therefore  $100 \text{ pF}$  across the output (e.g. about 3 ft. of shielded cable) will reduce the output at the higher frequencies. If this condition creates a problem, a shorter patch cord should be used.

#### 5.8.7 Meter Window Care

The clear acrylic meter window can become susceptible to electrostatic-charge buildup and can be scratched, if improperly cleaned.

It is treated inside and out in manufacturing with a special non-abrasive anti-static solution, Statnol\*, which normally should preclude any interference in meter operation caused by electrostatic effects. The problem is evidenced by the inability of the meter movement to return promptly to a zero reading, once it is deenergized. As supplied, the meter should return to zero reading within 30 seconds, immediately following the placement of a static charge, as by rubbing the outside surface. This meets the requirements of ANSI standard C39.1-1972.

If static-charge problems occur, possibly as the result of frequent cleaning, the window should be carefully polished with a soft dry cloth, such as cheesecloth or nylon chiffon. Then, a coating of Statnol should be applied with the polishing cloth.

\*Available from Mancib Co., Burlington, MA 01803



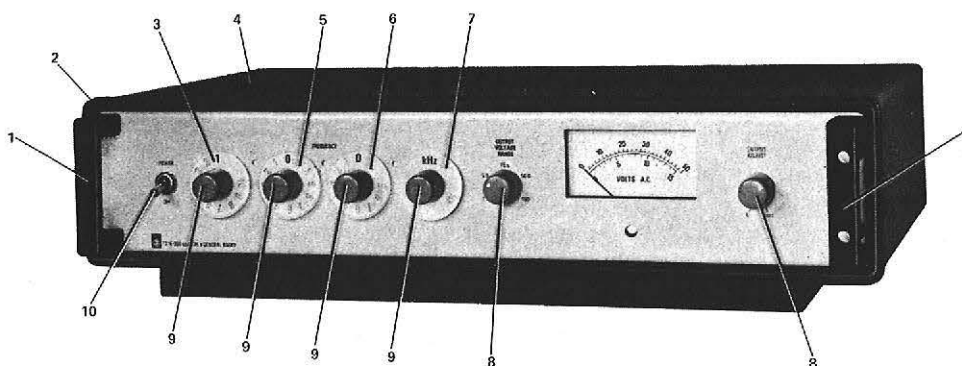


Figure 5-3. Mechanical parts, front view.

#### MECHANICAL PARTS LIST

Fig Ref	Qnt	Description	GR Part No.	Fed Mfg Code	Mfg Part No.
FRONT VIEW					
1.	2	Handle	5360-2007	24655	5360-2007
2.	1	Cabinet gasket	5331-2156	24655	5331-2156
3.	1	Dial asm., FREQUENCY	1864-1213	24655	1864-1213
4.	1	Bench cabinet asm. complete:	4172-4015	24655	4172-4015
	1	Bench cabinet asm.	4172-2042	24655	4172-2042
	1	Base asm.	4171-1021	24655	4171-1021
	1	Foot	4171-7010	24655	4171-7010
5.	1	Dial asm., FREQUENCY	5120-2440	24655	5120-2440
6.	1	Dial asm., FREQUENCY	1864-1230	24655	1864-1230
7.	1	Dial asm., Range	5120-2450	24655	5120-2450
8.	2	Knob asm., OUTPUT ADJUST; OUTPUT VOLTAGE RANGE, including retainer 5220-5402	5520-5221	24655	5520-5221
9.	4	Knob asm., FREQUENCY, including retainer 5220-5402	5520-5220	24655	5520-5220
10.	1	Toggle switch, A-S1, POWER/OFF	7910-1300	04009	83053-SA

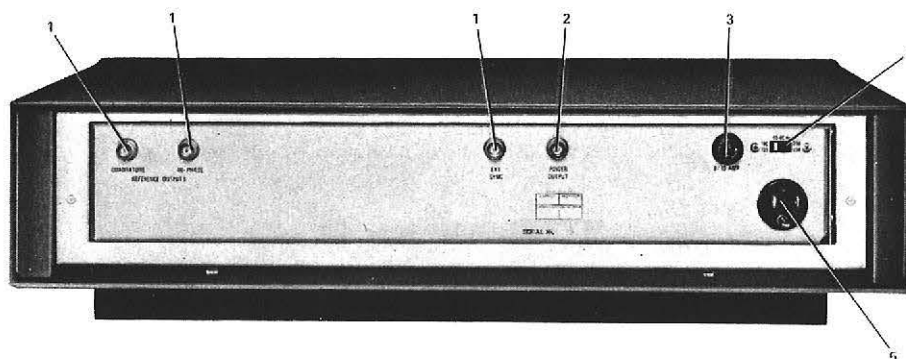


Figure 5-4. Mechanical parts, rear view.

#### MECHANICAL PARTS LIST

Fig Ref	Qnt	Description	GR Part No.	Fed Mfg Code	Mfg Part No.
REAR VIEW					
1.	3	Connector, A-J3, QUADRATURE; A-J4, IN-PHASE; A-J2, EXT SYNC.	4230-2300	81349	UG-1094/U
2.	1	Connector, A-J1, POWER OUTPUT	4230-2301	09408	UG-1094A/U
3.	1	Fuse mounting device	5650-0100	71400	HKP-H
4.	1	Slide switch, A-S2, LINE VOLTAGE SELECTOR	7910-0832	82389	11A-1118
5.	1	Connector, power plug, A-J5	4240-0210	24655	4240-0210

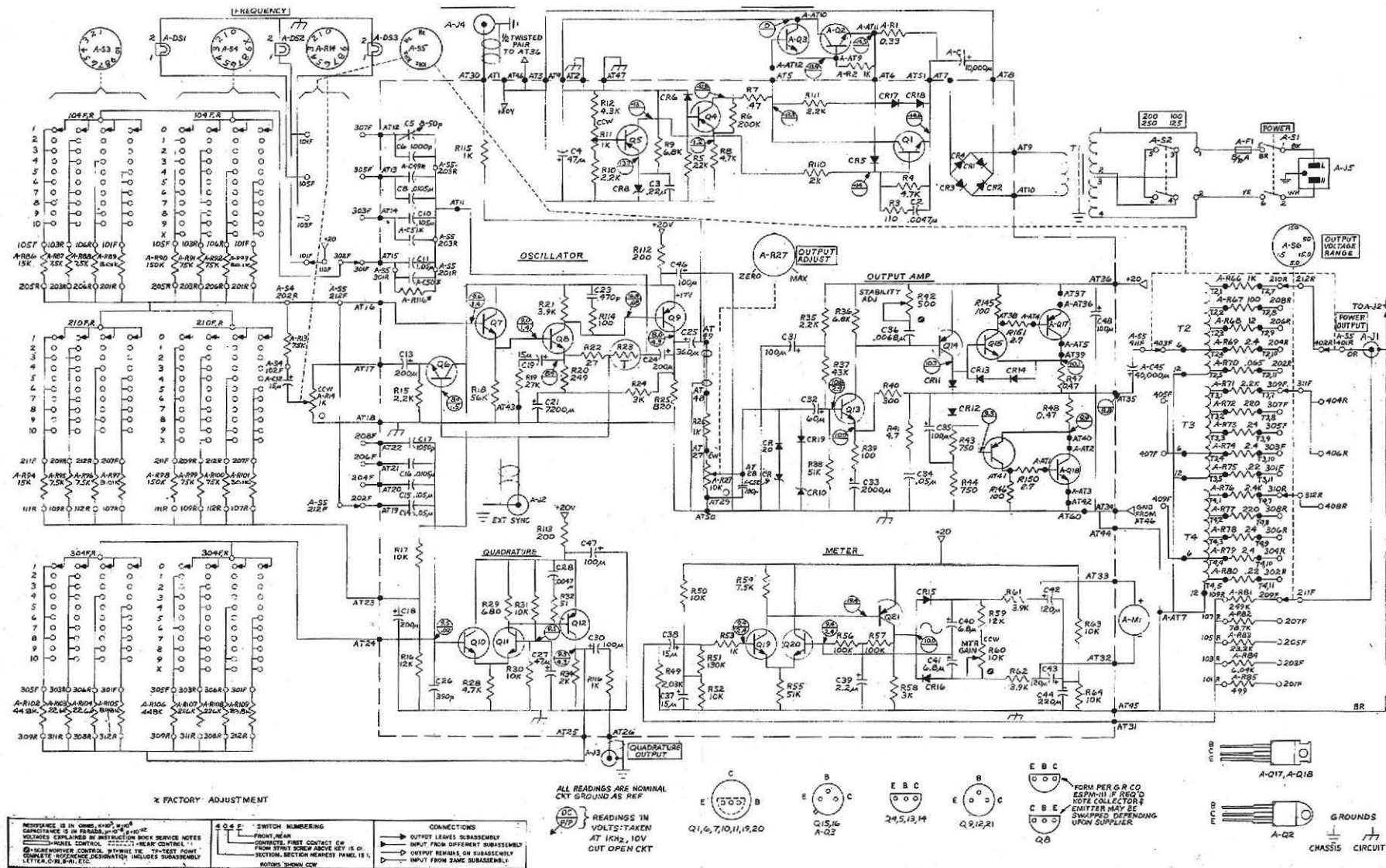


Figure 5-5. Schematic diagram of the Type 1316 Oscillator.





## ELECTRICAL PARTS LIST

CHASSIS MOUNTED PARTS P/N 1316-3000

REFDES		DESCRIPTION	PART NO.	FMC	MFGR	PART NUMBER
C	1	CAP ALUM 10000 UF 40V	4450-6211	90201	CGS	10000UF 40V
C	12	CAP ALUM 15 UF 15V	4450-3700	56289		300156G015
C	45	CAP ALUM 40000 UF 10V	4450-6216	90201	CGS	40000UF 10V
C	49	FACTORY ADJUST				
C	50	FACTORY ADJUST				
C	51	FACTORY ADJUST				
C	52	CAP CER DISC 180PF 10PCT 500V	4404-1188	72982		0831082Z5000181J
DS	1	LAMP FLANGE BASE 28V .04A 25000H	5600-0307	71744	CM-387	
DS	2	LAMP FLANGE BASE 28V .04A 25000H	5600-0307	71744	CM-387	
DS	3	LAMP FLANGE BASE 28V .04A 25000H	5600-0307	71744	CM-387	
F	1	FUSE SLO-BLOW 8/10A 250V	5330-1200	75915	313	.800
J	1	RECPT BNC	4230-2301	24655	4230-2301	
J	2	RECPT BNC	4230-2300	24655	4230-2300	
J	3	RECPT BNC	4230-2300	24655	4230-2300	
J	4	RECPT BNC	4230-2300	24655	4230-2300	
J	5	RECEPTACLE POWER IEC STD 6A 250V	4240-0210	24655	4240-0210	
M	1	METER	5730-1430	24655	5730-1430	
Q	2	TRANSISTOR TIP-33A	8210-1213	01295	TIP-33A	
Q	3	TRANSISTOR 2N2218	8210-1028	04713	2N2218	
Q	17	TRANSISTOR TIP-32A	8210-1208	01295	TIP-32A	
Q	18	TRANSISTOR TIP-31A	8210-1207	01295	TIP-31A	
R	1	RES WW MOLDED .33 OHM 5 PCT 2W	6760-8335	75042	BWH	0.33 OHM 5PCT
R	2	RES COMP 1.0 K 5PCT 1/4W	6099-2105	81349	RCR07G102J	
R	13	RES FLM 75K 1/2 PCT 1/2W	6451-2750	81349	RN65075020	
R	14	POT COMP KNOB 1K OHM 10 PCT LIN	6000-0300	01121	JAIN056S102UZ	
R	27	POT COMP KNOB 10K OHM 10 PCT LIN	6000-0600	01121	JAIN056S103UZ	
R	66	RES WW AX LEAD 1K OHM 5 PCT 5W	6660-2105	75042	AS-5 1K 5PCT	
R	67	RES WW AX LEAD 100 OHM 5 PCT 5W	6660-1105	75042	AS-5 100 OHM 5PCT	
R	68	RES WW AX LEAD 12 OHM 5 PCT 5W	6660-0125	75042	AS-5 12 OHM 5PCT	
R	69	RES WW AX LEAD 2.4 OHM 5PCT 10W	6670-9245	24655	6670-9245	
R	70	FACTORY ADJUST				
R	71	RES WW AX LEAD 2.2K OHM 5PCT 10W	6670-2225	75042	AS-10 2.2 K 5PCT	
R	72	RES WW AX LEAD 220 OHM 5 PCT 10W	6670-1225	75042	AS-10 220 OHM 5PCT	
R	73	RES WW AX LEAD 24 OHM 5 PCT 10W	6670-0245	24655	6670-0245	
R	74	RES WW AX LEAD 2.4 OHM 5PCT 10W	6670-9245	24655	6670-9245	
R	75	RES WW AX LEAD .22 OHM 5PCT 10W	6670-8225	24655	6670-8225	
R	76	RES WW AX LEAD 2.4K OHM 5PCT 10W	6670-2245	75042	AS-10 2.4 K 5PCT	
R	77	RES WW AX LEAD 220 OHM 5 PCT 10W	6670-1225	75042	AS-10 220 OHM 5PCT	
R	78	RES WW AX LEAD 24 OHM 5 PCT 10W	6670-0245	24655	6670-0245	
R	79	RES WW AX LEAD 2.4 OHM 5PCT 10W	6670-9245	24655	6670-9245	
R	80	RES WW AX LEAD .22 OHM 5PCT 10W	6670-8225	24655	6670-8225	
R	81	RES FLM 249K 1 PCT 1/8W	6250-3249	81349	RN5502493F	
R	82	RES FLM 78.7K 1 PCT 1/8W	6250-2787	81349	RN5507872F	
R	83	RES FLM 23.2K 1 PCT 1/8W	6250-2232	81349	RN5502322F	
R	84	RES FLM 6.04K 1 PCT 1/8W	6250-1604	81349	RN5506041F	
R	85	RES FLM 499 OHM 1 PCT 1/8W	6250-0499	81349	RN5504990F	
R	86	RES FLM 15K 1/2 PCT 1/2W	6451-2150	81349	RN65015020	
R	87	RES FLM 7.5K 1/2 PCT 1/2W	6451-1750	81349	RN65075010	
R	88	RES FLM 7.5K 1/2 PCT 1/2W	6451-1750	81349	RN65075010	
R	89	RES FLM 3.01K 1/2PCT 1/2W	6451-1301	81349	RN65030110	
R	90	RES FLM 150K 1/2 PCT 1/2W	6451-3150	81349	RN65015030	
R	91	RES FLM 75K 1/2 PCT 1/2W	6451-2750	81349	RN65075020	
R	92	RES FLM 75K 1/2 PCT 1/2W	6451-2750	81349	RN65075020	
R	93	RES FLM 30.1K 1/2PCT 1/2W	6451-2301	81349	RN65030120	
R	94	RES FLM 15K 1/2 PCT 1/2W	6451-2150	81349	RN65015020	
R	95	RES FLM 7.5K 1/2 PCT 1/2W	6451-1750	81349	RN65075010	
R	96	RES FLM 7.5K 1/2 PCT 1/2W	6451-1750	81349	RN65075010	
R	97	RES FLM 3.01K 1/2PCT 1/2W	6451-1301	81349	RN65030110	
R	98	RES FLM 150K 1/2 PCT 1/2W	6451-3150	81349	RN65015030	
R	99	RES FLM 75K 1/2 PCT 1/2W	6451-2750	81349	RN65075020	
R	100	RES FLM 75K 1/2 PCT 1/2W	6451-2750	81349	RN65075020	
R	101	RES FLM 30.1K 1/2PCT 1/2W	6451-2301	81349	RN65030120	
R	102	RES FLM 44.8K 1/2PCT 1/4W	6351-2448	81349	RN60044820	
R	103	RES FLM 22.6K 1/2 PCT 1/4W	6351-2226	81349	RN60022620	
R	104	RES FLM 22.6K 1/2 PCT 1/4W	6351-2226	81349	RN60022620	
R	105	RES FLM 8.98K 1/2PCT 1/4W	6351-1898	81349	RN60089810	
R	106	RES FLM 44.8K 1/2PCT 1/4W	6351-2448	81349	RN60044830	
R	107	RES FLM 226K 1/2 PCT 1/4W	6351-3226	81349	RN60022630	
R	108	RES FLM 226K 1/2 PCT 1/4W	6351-3226	81349	RN60022630	
R	109	RES FLM 89.8K 1/2PCT 1/4W	6351-2898	81349	RN60089820	
R	116	FACTORY ADJUST				

Note: Add Prefix Letter "A" To All Designator Letters

## ELECTRICAL PARTS LIST (cont)

CHASSIS MOUNTED PARTS P/N 1316-3000

REFDES		DESCRIPTION	PART NO.	FMC	MFGR	PART NUMBER
S	1	SWITCH TOGGLE 2 POS DPST STEADY	7910-1300	04009	83053	
S	2	SWITCH SLIDE 2 POS DPDT STEADY	7910-0832	82389	11A-1266	
S	3	SWITCH ROTARY ASM	7890-5540	24655	7890-5540	
S	4	SWITCH ROTARY ASM	7890-5541	24655	7890-5541	
S	5	SWITCH ROTARY ASM	7890-5542	24655	7890-5542	
S	6	SWITCH ROTARY ASM	7890-5543	24655	7890-5543	
T	1	TRANSFORMER POWER	0485-4046	24655	0485-4046	
T	2	TRANSFORMER	0485-4047	24655	0485-4047	
T	3	TRANSFORMER OUTPUT	0345-4890	24655	0345-4890	
T	4	TRANSFORMER ASM	1316-2010	24655	1316-2010	

Note: Add Prefix Letter "A" To All Designator Letters.

## ELECTRICAL PARTS LIST

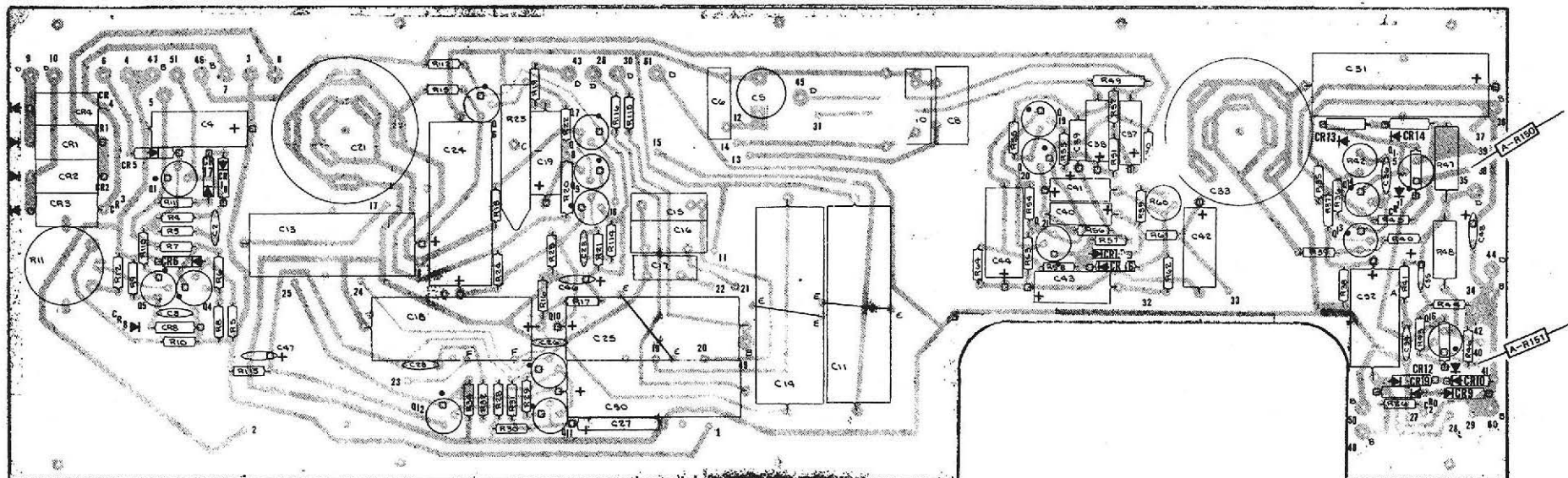
PC BOARD ASM P/N 1316-4700

REFDES	DESCRIPTION	PART NO.	FMC	MFR	PART NUMBER
C 2	CAP CER DISC.0047UF80/20PCT500V	4405-2479	72982	0801082Z5U0047Z	
C 3	CAP CER DISK 0.22UF 80/20PCT 12V	4432-4229	72982	5615-000-Y5F-224Z	
C 4	CAP TANT 47 UF 20PCT 35V	4450-5702	56289	1500476X0035S2	
C 5	CAP CER TRIM 8-50 PF	4910-1170	72982	557-051 E 8-50PF	
C 6	CAP MICA 1000 PF 1PCT 500V	4851-0361	72136	DM19FD1000PF1PCT4CR	
C 8	CAP MICA 10500PF 1PCT 500V	4565-2105	81349	CM07FD10500PF 1PCT	
C 10	CAP POLY CARB 0.105JF 1PCT 100V	4862-2060	75042	X463UW 0.105UF 1PCT	
C 11	CAP POLY 1.05UF 1PCT 100V	4873-6105	24655	4873-6105	
C 13	CAP ALUM 200 UF 12V	4450-0400	56289	30D207G012	
C 14	CAP POLY 1.05UF 1PCT 100V	4873-6105	24655	4873-6105	
C 15	CAP POLY CARB 0.105UF 1PCT 100V	4862-2060	75042	X463UW 0.105UF 1PCT	
C 16	CAP MICA 10500PF 1PCT 500V	4565-2105	81349	CM07FD10500PF 1PCT	
C 17	CAP MICA 1050PF 1PCT 500V	4710-1050	81349	CM06FD1050FN	
C 18	CAP ALUM 200 UF 12V	4450-0400	56289	30D207G012	
C 19	CAP ALUM 15 UF 15V	4450-3700	56289	300156G015	
C 21	CAP ALUM 3600-1800-1800 UF 10V	4450-5609	56289	60D 10V	
C 24	CAP ALUM 200 UF 12V	4450-0400	56289	30D207G012	
C 25	CAP ALUM 360 UF 25V	4450-6025	56289	300367G025	
C 26	CAP CER DISC 390PF 5PCT 500V	4404-1395	72982	0831082Z5U000391J	
C 27	CAP TANT 47 UF 20PCT 20V	4450-5614	56289	1500476X0020R2	
C 28	CAP CER DISC.0047UF80/20PCT500V	4405-2479	72982	0801082Z5U0047Z	
C 30	CAP ALUM 100 UF 25V	4450-2300	56289	30D107G025	
C 31	CAP ALUM 100 UF 25V	4450-2300	56289	30D107G025	
C 32	CAP ALUM 60 UF 25V	4450-2900	56289	300606G025	
C 33	CAP ALUM 2000 UF 35V	4450-7430	90201	FP 2000UF 35V	
C 34	CAP CER DISC.047/.05UF80/20 100V	4403-3500	56289	0845024Z5U05032	
C 35	CAP TANT 100 UF 20PCT 20V DIP	4450-6253	90201	TDC 100UF 20PCT 20V	
C 36	CAP CER DISC 6800PF 20PCT 1.4KV	4406-2689	72982	848-25U-6800 PF20 PCT	
C 37	CAP TANT 15 UF 20PCT 20V	4450-5200	56289	1500156X0020B2	
C 38	CAP TANT 15 UF 20PCT 20V	4450-5200	56289	1500156X0020B2	
C 39	CAP TANT 2.2 UF 20PCT 20V	4450-4500	56289	1500225X0020A2	
C 40	CAP TANT 6.8 UF 20PCT 35V	4450-5000	56289	1500685X0035B2	
C 41	CAP TANT 6.8 UF 20PCT 35V	4450-5000	56289	1500685X0035B2	
C 42	CAP TANT 120 UF 20PCT 10V	4450-5616	56289	1500127X0010R2	
C 43	CAP TANT 120 UF 20PCT 10V	4450-5616	56289	1500127X0010R2	
C 44	CAP TANT 220 UF 20PCT 10V	4450-5706	56289	1500227X0010S2	
C 46	CAP TANT 100 UF 20PCT 20V DIP	4450-6253	90201	TDC 100UF 20PCT 20V	
C 47	CAP TANT 100 UF 20PCT 20V DIP	4450-6253	90201	TDC 100UF 20PCT 20V	
C 48	CAP TANT 100 UF 20PCT 20V DIP	4450-6253	90201	TDC 100UF 20PCT 20V	
CR 1	RECT IN4140 100PIV 3A SI ALXM	6081-1014	14433	IN4140	
CR 2	RECT IN4140 100PIV 3A SI ALXM	6081-1014	14433	IN4140	
CR 3	RECT IN4140 100PIV 3A SI ALXM	6081-1014	14433	IN4140	
CR 4	RECT IN4140 100PIV 3A SI ALXM	6081-1014	14433	IN4140	
CR 5	DIODE IN4154 25PIV IR.1UA SI	6082-1012	14433	IN4154	
CR 6	DIODE IN4154 25PIV IR.1UA SI	6082-1012	14433	IN4154	
CR 8	ZENER IN957B 6.8V 5PCT .4W	6083-1009	07910	IN957B	
CR 9	ZENER IN750 4.7V 10PCT .4W	6083-1003	14433	IN750	
CR 10	ZENER IN750 4.7V 10PCT .4W	6083-1003	14433	IN750	
CR 11	DIODE IN4151 75PIV IR.1UA SI	6082-1001	14433	IN3604	
CR 12	DIODE IN4151 75PIV IR.1UA SI	6082-1001	14433	IN3604	
CR 13	DIODE IN4151 75PIV IR.1UA SI	6082-1001	14433	IN3604	
CR 14	DIODE IN4151 75PIV IR.1UA SI	6082-1001	14433	IN3604	
CR 15	DIODE IN4151 75PIV IR.1UA SI	6082-1001	14433	IN3604	
CR 16	DIODE IN4151 75PIV IR.1UA SI	6082-1001	14433	IN3604	
CR 17	DIODE IN4151 75PIV IR.1UA SI	6082-1001	14433	IN3604	
CR 18	DIODE IN4151 75PIV IR.1UA SI	6082-1001	14433	IN3604	
CR 19	DIODE IN4154 25PIV IR.1UA SI	6082-1012	14433	IN4154	
CR 20	DIODE IN4154 25PIV IR.1UA SI	6082-1012	14433	IN4154	
Q 1	TRANSISTOR 2N3414	8210-1290	56289	2N3414	
Q 4	TRANSISTOR 2N3905	8210-1114	04713	2N3905	
Q 5	TRANSISTOR 2N3905	8210-1114	04713	2N3905	
Q 6	TRANSISTOR 2N3414	8210-1290	56289	2N3414	
Q 7	TRANSISTOR 2N3414	8210-1290	56289	2N3414	
Q 8	TRANSISTOR 2N4123	8210-1123	04713	2N4123	
Q 9	TRANSISTOR 2N4250	8210-1294	07263	2N4250	
Q 10	TRANSISTOR 2N3414	8210-1290	56289	2N3414	
Q 11	TRANSISTOR 2N3414	8210-1290	56289	2N3414	
Q 12	TRANSISTOR 2N4250	8210-1294	07263	2N4250	
Q 13	TRANSISTOR 2N3903	8210-1132	04713	2N3903	
Q 14	TRANSISTOR 2N3905	8210-1114	04713	2N3905	
Q 15	TRANSISTOR 2N2218	8210-1028	04713	2N2218	
Q 16	TRANSISTOR 2N2904	8210-1074	04713	2N2904	
Q 19	TRANSISTOR PN3391A	8210-1292	56289	PN3391A	
Q 20	TRANSISTOR PN3391A	8210-1292	56289	PN3391A	
Q 21	TRANSISTOR 2N4250	8210-1294	07263	2N4250	

## ELECTRICAL PARTS LIST (cont)

PRINTED CIRCUIT BOARD P/N 1316-4700

REFDES	DESCRIPTION	PART NO.	FMC	MFGR PART NUMBER
R 3	RES COMP 110 OHM 5PCT 1/4W	6099-1115	81349	RCR07G111J
R 4	RES COMP 4.7 K 5PCT 1/4W	6099-2475	81349	RCR07G472J
R 5	RES COMP 22 K 5PCT 1/4W	6099-3225	81349	RCR07G223J
R 6	RES COMP 200 K OHM 5PCT 1/4W	6099-4205	81349	RCR07G204J
R 7	RES COMP 47 OHM 5PCT 1/4W	6099-0475	81349	RCR07G470J
R 8	RES COMP 4.7 K 5PCT 1/4W	6099-2475	81349	RCR07G472J
R 9	RES COMP 6.8 K 5PCT 1/4W	6099-2685	81349	RCR07G682J
R 10	RES COMP 2.2 K 5PCT 1/4W	6099-2225	81349	RCR07G222J
R 11	POT WW TRM 1K OHM 10 PCT 1T	6056-0138	24655	6056-0138
R 12	RES COMP 4.3 K OHM 5PCT 1/4W	6099-2435	81349	RCR07G432J
R 15	RES COMP 2.2 K 5PCT 1/4W	6099-2225	81349	RCR07G222J
R 16	RES COMP 12 K 5PCT 1/4W	6099-3125	81349	RCR07G123J
R 17	RES COMP 10 K 5PCT 1/4W	6099-3105	81349	RCR07G103J
R 18	RES COMP 56 K 5PCT 1/4W	6099-3565	81349	RCR07G563J
R 19	RES COMP 27 K 5PCT 1/4W	6099-3275	81349	RCR07G273J
R 20	RES FLM 249 OHM 1 PCT 1/4W	6350-0249	81349	RN60D2490F
R 21	RES COMP 3.9 K 5PCT 1/4W	6099-2395	81349	RCR07G392J
R 22	RES COMP 27 OHM 5PCT 1/4W	6099-0275	81349	RCR07G270J
R 23	THERMISTOR 40K OHM 20PCT	6740-1400	15801	8A-44V3
R 24	RES COMP 3.0 K OHM 5PCT 1/4W	6099-2305	81349	RCR07G302J
R 25	RES COMP 820 OHM 5PCT 1/4W	6099-1825	81349	RCR07G821J
R 26	RES COMP 1.0 K 5PCT 1/4W	6099-2105	81349	RCR07G102J
R 28	RES COMP 4.7 K 5PCT 1/4W	6099-2475	81349	RCR07G472J
R 29	RES COMP 680 OHM 5PCT 1/4W	6099-1685	81349	RCR07G681J
R 30	RES COMP 10 K 5PCT 1/4W	6099-3105	81349	RCR07G103J
R 31	RES COMP 10 K 5PCT 1/4W	6099-3105	81349	RCR07G103J
R 32	RES COMP 51 OHM 5PCT 1/4W	6099-0515	81349	RCR07G510J
R 34	RES COMP 2.0 K OHM 5PCT 1/4W	6099-2205	81349	RCR07G202J
R 35	RES COMP 2.2 K 5PCT 1/4W	6099-2225	81349	RCR07G222J
R 36	RES COMP 6.8 K 5PCT 1/4W	6099-2685	81349	RCR07G682J
R 37	RES COMP 43 K OHM 5PCT 1/4W	6099-3435	81349	RCR07G433J
R 38	RES COMP 51 K OHM 5PCT 1/4W	6099-3515	81349	RCR07G513J
R 39	RES COMP 100 OHM 5PCT 1/4W	6099-1105	81349	RCR07G101J
R 40	RES COMP 300 OHM 5PCT 1/4W	6099-1305	81349	RCR07G301J
R 41	RES COMP 4.7 OHM 5PCT 1/4W	6099-9475	81349	RCR07G47J
R 42	POT CERM TRM 500 OHM 10 PCT 1T	6049-0214	01121	SV5011
R 43	RES COMP 750 OHM 5PCT 1/4W	6099-1755	81349	RCR07G751J
R 44	RES COMP 750 OHM 5PCT 1/4W	6099-1755	81349	RCR07G751J
R 45	RES COMP 100 OHM 5PCT 1/4W	6099-1105	81349	RCR07G101J
R 46	RES COMP 100 OHM 5PCT 1/4W	6099-1105	81349	RCR07G101J
R 47	RES WW MOLDED .47 OHM 10 PCT 2W	6760-8479	75042	BWH 0.47 OHM 10PCT
R 48	RES WW MOLDED .47 OHM 10 PCT 2W	6760-8479	75042	BWH 0.47 OHM 10PCT
R 49	RES FLM 2.03K 1/2PCT 1/8W	6251-1203	81349	RN55D2031D
R 50	RES COMP 10 K 5PCT 1/4W	6099-3105	81349	RCR07G103J
R 51	RES COMP 130 K OHM 5PCT 1/4W	6099-4135	81349	RCR07G134J
R 52	RES COMP 10 K 5PCT 1/4W	6099-3105	81349	RCR07G103J
R 53	RES COMP 1.0 K 5PCT 1/4W	6099-2105	81349	RCR07G102J
R 54	RES COMP 7.5 K OHM 5PCT 1/4W	6099-2755	81349	RCR07G752J
R 55	RES COMP 51 K OHM 5PCT 1/4W	6099-3515	81349	RCR07G513J
R 56	RES COMP 100 K 5PCT 1/4W	6099-4105	81349	RCR07G104J
R 57	RES COMP 100 K 5PCT 1/4W	6099-4105	81349	RCR07G104J
R 58	RES COMP 3.0 K OHM 5PCT 1/4W	6099-2305	81349	RCR07G302J
R 59	RES COMP 12 K 5PCT 1/4W	6099-3125	81349	RCR07G123J
R 60	POT CERM TRM 10K OHM 10 PCT 1T	6049-0218	01121	SV1031
R 61	RES COMP 3.9 K 5PCT 1/4W	6099-2395	81349	RCR07G392J
R 62	RES COMP 3.9 K 5PCT 1/4W	6099-2395	81349	RCR07G392J
R 63	RES COMP 10 K 5PCT 1/4W	6099-3105	81349	RCR07G103J
R 64	RES COMP 10 K 5PCT 1/4W	6099-3105	81349	RCR07G103J
R 110	RES COMP 2.0 K OHM 5PCT 1/4W	6099-2205	81349	RCR07G202J
R 111	RES COMP 2.2 K 5PCT 1/4W	6099-2225	81349	RCR07G222J
R 112	RES COMP 200 OHM 5PCT 1/4W	6099-1205	81349	RCR07G201J
R 113	RES COMP 200 OHM 5PCT 1/4W	6099-1205	81349	RCR07G201J
R 114	RES COMP 100 OHM 5PCT 1/4W	6099-1105	81349	RCR07G101J
R 115	RES COMP 1.0 K 5PCT 1/4W	6099-2105	81349	RCR07G102J
R 116	RES COMP 1.0 K 5PCT 1/4W	6099-2105	81349	RCR07G102J
AR 150	RES COMP 2.7 OHM 5PCT 1/4W	6099-9275	81349	RCR07G2R7J
AR 151	RES COMP 2.7 OHM 5PCT 1/4W	6099-9275	81349	RCR07G2R7J



Etched-circuit board assembly (P/N 1316-4700) for the Type 1316 Oscillator.

NOTE: The board is shown foil-side up. The number appearing on the foil side is *not* the part number. The dot on the foil at the transistor socket indicates the collector lead.

